

# Junction improvements in the Queensway and B3440 area

## We're making changes to...

- the Queensway and Walford Avenue junction
- the Queensway and Bristol Road junction the B3440 slip roads
- the Victory roundabout and Summerhouse roundabout on New Bristol Road.

We are currently working to an autumn 2025 start for the works, running through until early 2027.

The junctions will remain in use throughout the duration of the works, as each section will be completed in phases.

These improvements will make the junctions more efficient for all traffic, including bus passengers and people who walk, wheel, or cycle.

By improving infrastructure and traffic flow to support current and future bus services, we can make better use of our road space.

With future development and population growth ahead, we must ease pressure and improve road conditions for the years to come.

## Project objectives

1. Create more capacity at the Queensway, New Bristol Road and B3440 junctions to cope with traffic, as use of our road network continues to grow in the future
2. Make it quicker and smoother for traffic to travel through the junctions
3. Provide better walking, cycling and wheeling facilities, making healthier, sustainable active travel more appealing and accessible
4. Create the infrastructure needed for high-quality, sustainable bus services for all, that stand the test of time
5. Achieve faster, more reliable bus travel on the 6, 7, 9, X1, X1s, X5, X11, X12, X14, X18, 1s and A3 services.

We will also carry out significant maintenance, such as resurfacing and improving drainage, crossings and streetlights.

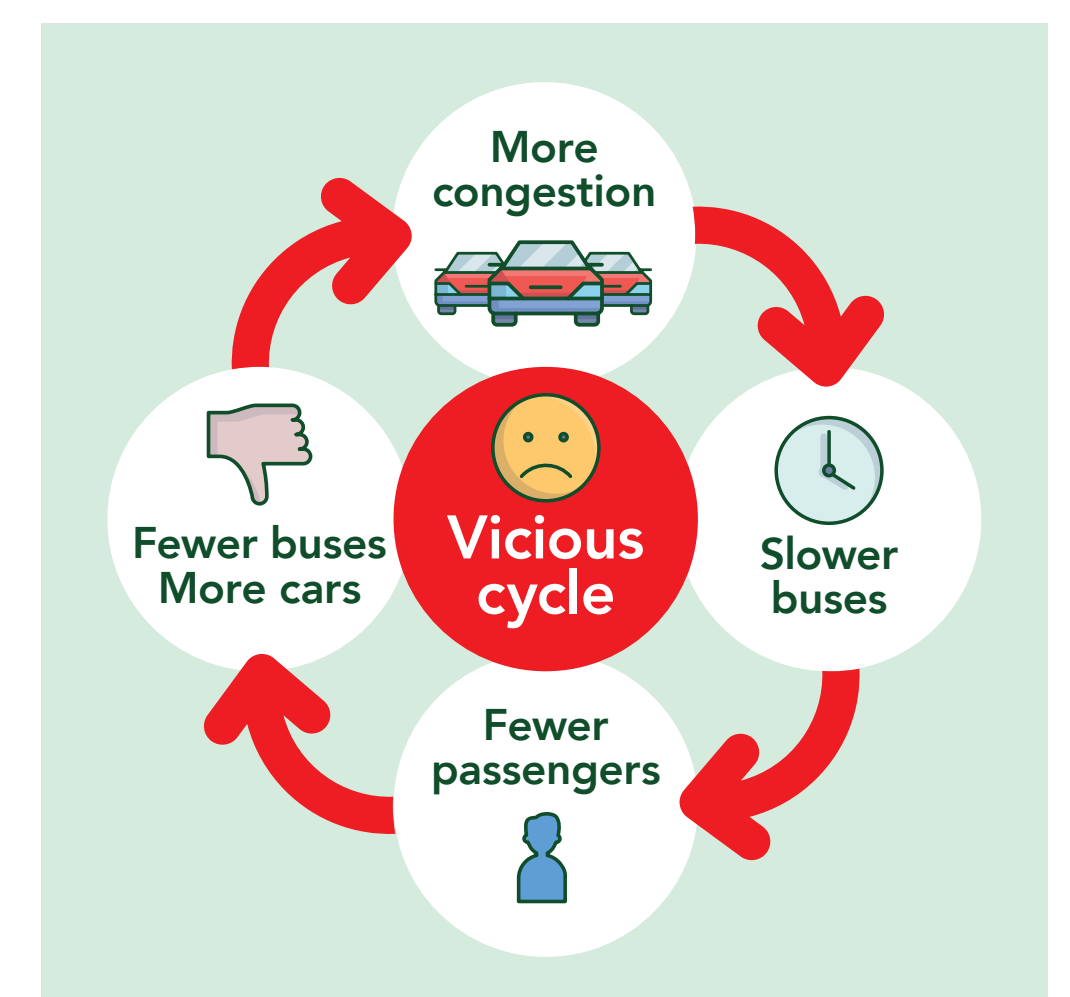
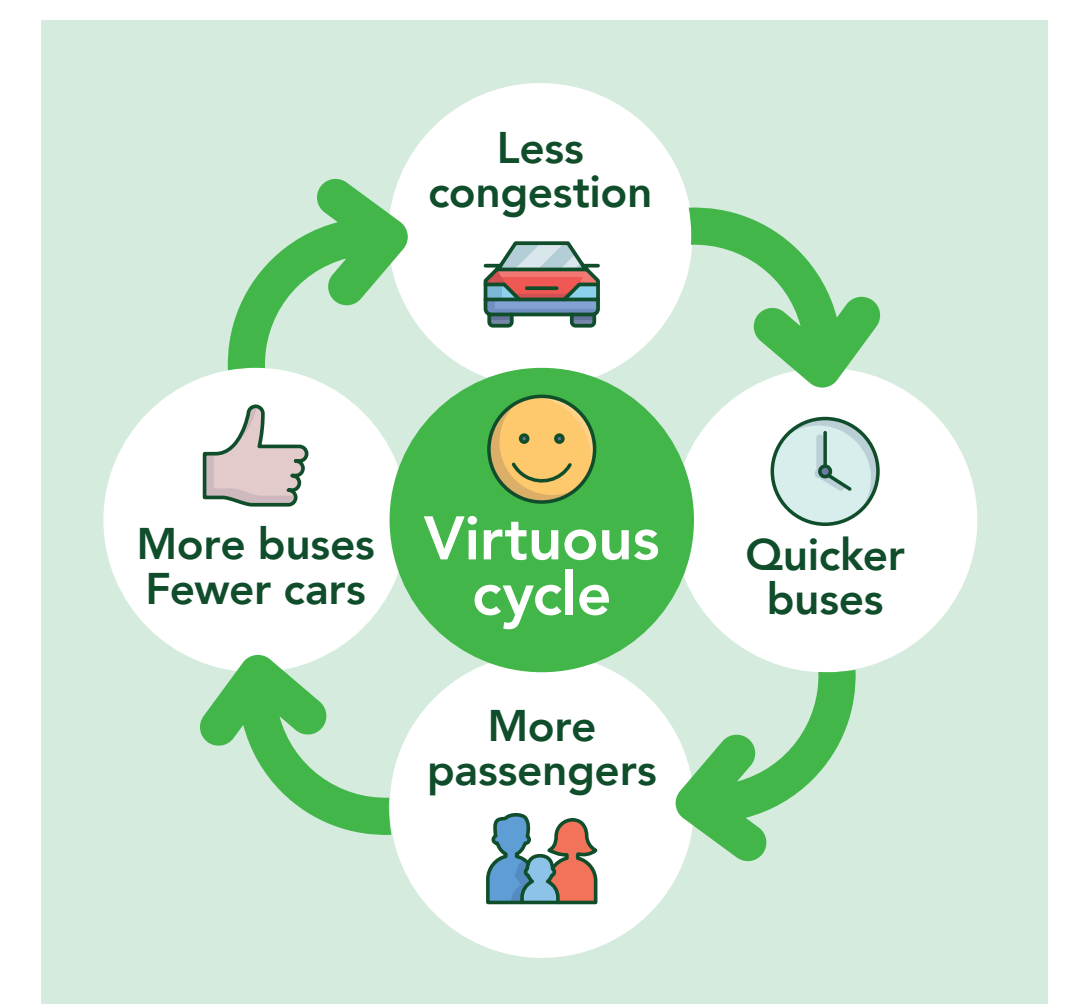
Separately, the existing Worle bus interchange will be upgraded with high-quality shelters, real-time information, comfortable seating and LED lighting.

## More resilient and robust roads and buses

The junction improvements represent an important investment in our wider road and bus network supported by the Government.

Funding has been awarded specifically for this purpose.

With better buses, more people can travel affordably, accessibly and sustainably to work, visit loved ones, and stay connected. It means less pressure on our roads, better use of public space, a cleaner environment – and that these vital services are protected for North Somerset.





## Improvements to the Queensway junctions

We're going to build two connected roundabouts in place of the existing traffic light junctions of the Queensway and Walford Avenue, and Bristol Road and the B3440. This change will help these junctions function more fluidly and support a higher volume of traffic than they can currently.

### The new layout will also include:

- a segregated lane for traffic travelling in from J21 towards Bristol Road, to bypass the southern roundabout
- a short dual carriageway for traffic leaving this segregated lane, going west on Bristol Road after the southern roundabout
- a short dual carriageway going in the opposite direction (east) on Bristol Road after the southern roundabout
- a 60m bus lane going south on the Queensway, for faster bus journeys up to the Walford junction

- upgrading the existing crossing on Walford Avenue for walking, cycling and wheeling
- a new crossing where the Queensway and National Cycle Route 33 crosses for walking, cycling and wheeling.

### Benefits

- Junctions work more effectively
- More traffic can flow through
- Quicker and smoother journeys
- Reducing delays outside of morning and evening peaks (when not impacted by the M5 at junction 21)
- Improved walking, cycling and wheeling facilities
- Significant investment in local bus travel
- Faster, more reliable bus journeys on the 6, 7, 9, X1, X1s, X5, X11, X12, X14, X18, 1s and A3 services

- Bus lanes can be used by buses, coaches, cyclists, motorcycles and hackney carriages.



## Victory roundabout improvements

On New Bristol Road, we'll be widening the Victory roundabout along its west side, with a second exit lane to improve vehicle access and traffic flow. The Victory roundabout is at the entrance to the Sainsbury's trading estate.

We won't be physically changing the nearby Summerhouse pub roundabout.

We will add enhanced road signs and lines on the approach to it to help improve traffic movements through the junction.



### Benefits

- Junctions work more effectively
- Quicker and smoother journeys.



## B3440 slip roads improvements

The nearby B3440 slip roads, which connect the A370 off junction 21 of the M5, will be updated with new bus lanes for services travelling in and out of Weston-super-Mare.

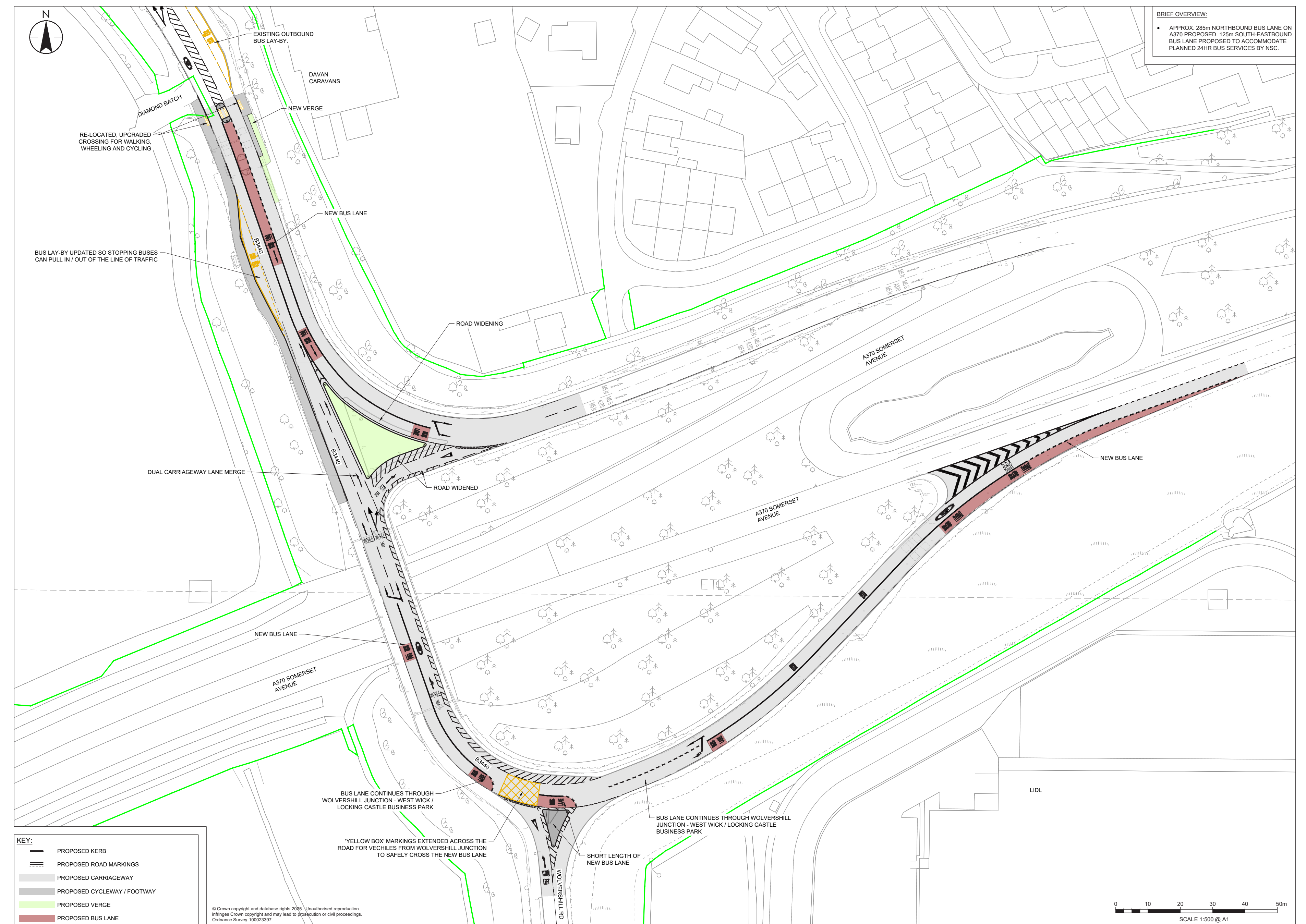
- The bus lane going into Weston will be 265m long and run from the A370 Somerset Avenue dual carriageway slip road to the Bristol Road overbridge.
- The bus lane coming out of Weston will be 130m long, running from south of the Shepherds Way junction to the top of the A370 Somerset Avenue dual carriageway slip road.

We will also upgrade the B3440 traffic lights to smart traffic signals. Smart traffic signals better sense traffic moving at the junction, and coordinate with other, nearby traffic lights, to help manage traffic to move through more efficiently.

The signals have in-built technology that can detect approaching buses using GPS signals, to give buses priority over other traffic.

## Benefits

- Support better local traffic flow alongside the Queensway and New Bristol Road junction improvements, and National Highways changes to the J21 slip road off the M5
- Bus lanes on the B3440 slip-roads will allow for fastest possible journeys at peak times
- Significant investment in local bus travel for a growing population – our population is growing, and more people travelling on buses releases pressure on our roads, makes more effective use of limited road space, and speeds up journeys for everyone. Enhanced bus services can carry a larger number of passengers more effectively than individual private vehicles in our existing road space
- Bus lanes can be used by buses, coaches, cyclists, motorcycles and hackney carriages.





# Project timeline

Autumn 2025	
	Expected start of main construction period for project.
Autumn 2025	
	Work starts on B3440 slip roads, and minor works to Queensway junctions. The junctions will remain in use throughout the duration of the works, as each section will be completed sequentially.
December 2025	
	Work to Victory roundabout on New Bristol Road.
March 2026	
	Main works on Queensway junctions.
Early 2027	
	Completion of main construction period.

# Delivery partners

The Queensway, Bristol Road and B3440 junction improvement scheme is being funded by the UK Government’s Department for Transport (DfT) and delivered by North Somerset Council.

The conditions of this funding mean it cannot be used for any non-BSIP related council activities or services, such as filling in potholes in the non-scheme area.

# Traffic management and mitigations

We will minimise disruption while the work takes place as much as possible. We will need to manage traffic in a way that balances efficient delivery, the safety of the public and our on-site team, and traffic movements.

During this time, we will need everyone to check before they travel, look at alternative transport options to get where they want to go if possible, and plan their journeys.

# We will be coordinating our traffic management approach with:

- the North Somerset Council Highway Maintenance team
- other major projects in the area such as Banwell Bypass and the Winterstoke Road replacement bridge
- National Highways’ St Georges Bridge works
- bus operators
- Weston-super-Mare Town Council
- local businesses.

Where temporary road closures are needed, such as for resurfacing, this will be coordinated with National Highways and will happen at night.

More detailed traffic management information will be available at the start of the main works period.

For more information and updates scan this QR code:



# Planning your journey

## Stay informed of what’s happening on our road network by:

- Checking One Network for details of roadworks: [www.one.network](http://www.one.network)
- Finding temporary bus service changes at: [www.travelwest.info](http://www.travelwest.info)
- Using Google Maps for live journey time estimates and traffic information at: [www.google.co.uk/maps](http://www.google.co.uk/maps)
- Follow [North Somerset Council’s main Facebook page](#) and the [North Somerset Travel and Roads Facebook page](#) for social media updates
- If you’re a local resident or business in the immediate works area, you will receive a letter through the door inviting you to sign up to a scheme newsletter.

## Plan your journey with the 4Rs

### Re-time:

- Give yourself extra time
- Set off earlier
- Travel outside of peak times

### Re-route:

- Take a different route to normal
- Check official diversion routes (don’t rely on satnav)

### Re-mode:

- Try other travel options if you can
- Bus, train, car share, walk or cycle to help reduce traffic on the road

### Reduce:

- Do you need to make the journey?
- Can you work from home?