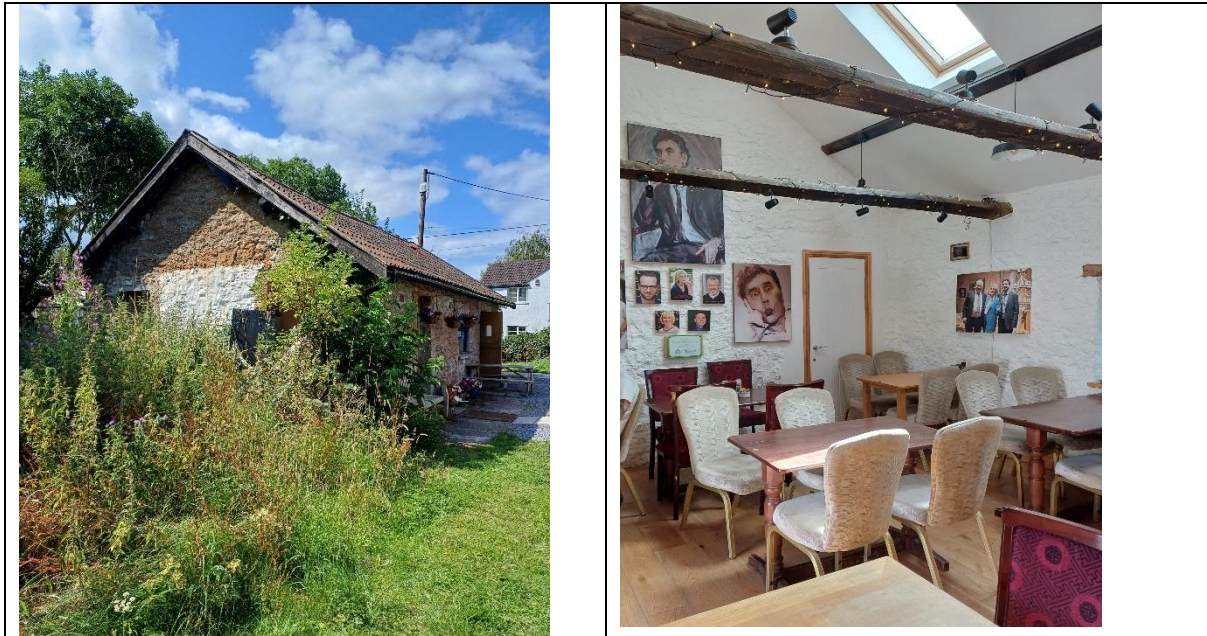


The Frankie Howerd OBE Trust

An extension to the community café



The area local to the Frankie Howerd Community Café in Loxton has lost nearly all of its services in the past few years, resulting in reduced community cohesion and increased loneliness and isolation, particularly for elderly people. Many local elderly residents find it hard to access the services they require to live independently such as shopping, health care, and places to socialise. The Frankie Howerd Community Café is addressing these challenges by providing a shared space, open seven days a week. This has helped people to socialise and network, reducing isolation in this rural community. However, the café has become so successful that it is now too small to accommodate both local customers and passing tourists, especially in the warmer months. Regulars have sometimes found no space to sit and group bookings have had to be turned down.

The Frankie Howerd OBE Trust applied to the Rural England Prosperity Fund (REPF) to help build an extension to the existing community café to provide increased space as well as a fully accessible, disabled toilet. This extension creates additional seating and will allow more elderly residents to attend meals and events, becoming a dedicated space for groups. The improvements should permit more social and wellbeing activities to take place as well as accommodate

the number of tourists who visit. The improved toilet facilities will encourage those who are most isolated due to disability or other reasons who do not currently visit the café, to attend. The project will also result in increased volunteering opportunities.

<https://frankiehowerdobetrust.org/>