

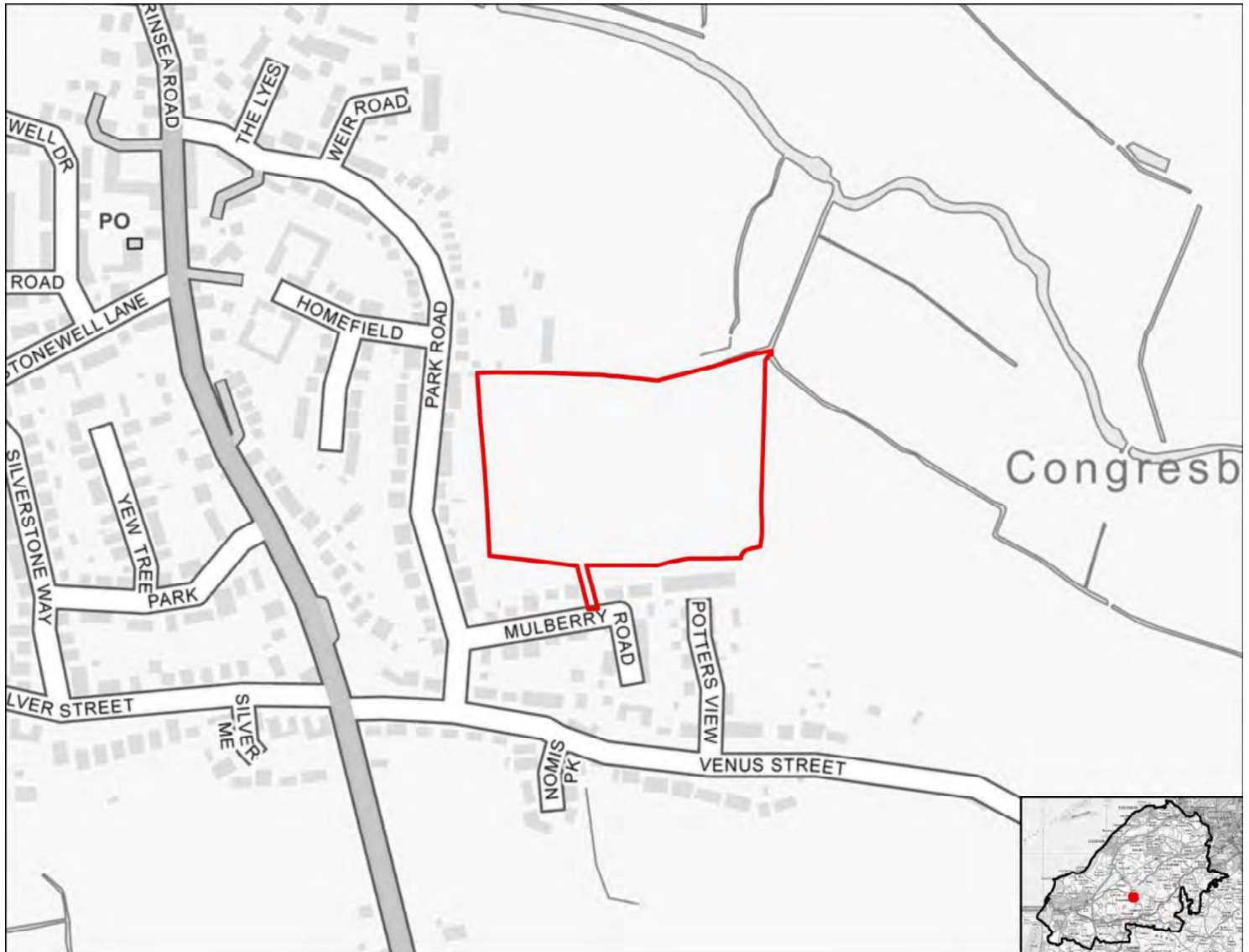


Statement of Case Appendix 14

Residential Proformas for SA (HE20375)

HE20375

Residential use



SA objective 1.1 Ensure a range of job opportunities are easily accessible without having to use a car.

Significant negative (--)

The site is not within 5km of Weston-super-mare, the Centre of Bristol, Clevedon, Nailsea or Portishead.

SA objective 1.2: Provide opportunities to improve economic wellbeing and reduce economic inequalities by providing good access to educational and training opportunities.

Significant negative (--)

The site is over 5km from centres for employment and is over 900m from a primary school and over 1.8km from a secondary school or college.

SA objective 1.3: Promote the optimal use of land which supports regeneration, maximise re-use of previously developed (brownfield) land and protects the rural economy.

Significant negative (--)

The site is on greenfield land and contains land classified as agricultural grade 1-2.

SA objective 1.4: Promote development which requires a deliverable level of high-quality and sustainable infrastructure.

Negligible (0)

All sites are recorded as having a negligible effect in relation to this SA objective.

SA objective 2.1: Boost housing delivery and meet the housing need identified within the plan period.

Negligible (0)

All sites are recorded as having a negligible effect in relation to this SA objective.

SA objective 2.2: Deliver affordable or specialist housing where it is most needed to meet the needs of North Somerset's population.

Negligible (0)

The site is not located in an area with identified need for affordable housing (as per the Barriers to Housing and Services IMD domain).

SA objective 2.3: Achieve reasonable access to a wide range of community, educational, town centre and healthcare facilities.

Negligible (0)

The site is within 720m of a local centre but not a town or district centre.

SA objective 2.4: Enhance community cohesion and community facilities provision including cultural facilities.

Negligible (0)

The site is not of a sufficient scale to support the delivery of substantial new services and facilities.

SA objective 2.5: Achieve healthy living opportunities promoting good access to healthcare centres, open spaces, Public Rights of Way, walking and cycling opportunities, and outdoor leisure activities.

Minor positive (+)

The site is within 720m of at least two types of facility that are likely to support health and wellbeing, including a cycling route, an indoor/outdoor leisure facility, an open space site, a Public Right of Way.

SA Objective 3.1: Reduce carbon emissions by supporting appropriate decentralised renewable energy generation.

Negligible (0)

All sites are recorded as having a negligible effect in relation to this SA objective.

SA objective 3.2: Minimise vulnerability to tidal fluvial flooding, without increasing flood risk elsewhere. Also minimise surface water flood risk and harm to water quality and availability.

Negligible (0)

The site is not within an area identified as being at risk of flooding from fluvial or tidal sources or surface water and is not within a Source Protection Zone.

SA objective 3.3: Reduce the need to travel by car to minimise environmental impacts of unsustainable forms of travel, including transport related carbon emissions and air pollution. Ensure good access to infrastructure that promotes travel by active modes (walking and cycling).

Minor positive (+)

The site is more than 1.8km from a railway station but it is within 450m of a bus stop and cycle route.

SA objective 3.4: Minimise impact on and where appropriate enhance sensitive landscapes.

Negligible (0)

The majority of the site has been recorded as having low landscape sensitivity.

SA objective 3.5: To conserve and enhance historic places, heritage assets and their settings.

Minor negative (-)

The site has been assessed as 'amber' in relation to potential effects on setting.

SA objective 3.6: Protect and where possible enhance biodiversity, geodiversity and green infrastructure and allow for its adaptation to climate change, particularly with respect to protected habitats and species.

Minor negative (-)

The site is between 250m and 1km of one more internationally or nationally designated biodiversity or geodiversity sites. The site is within 250m of a locally designated site. The site is within zone B or C for the North Somerset and Mendip Bats SAC.