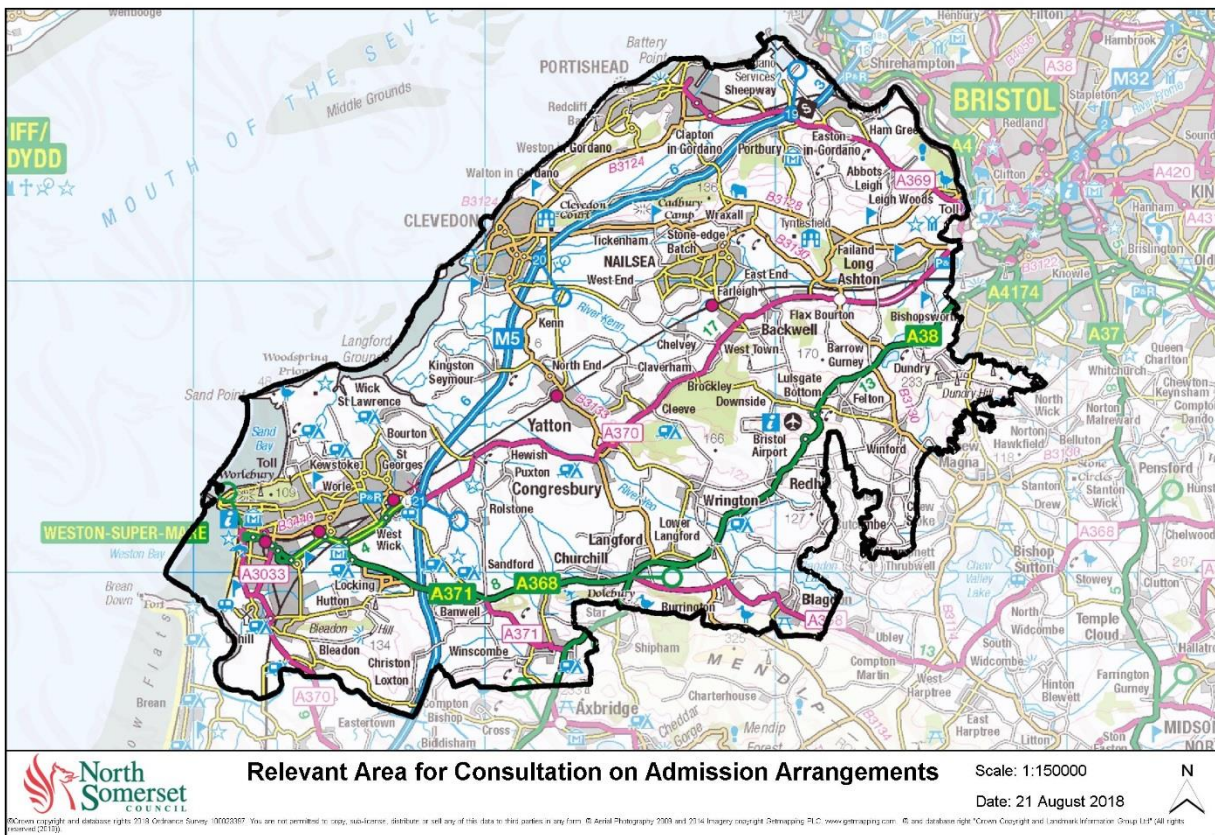


## Relevant Area for Consultation on Admission Arrangements 2024-26

The School Standards and Framework Act 1998, requires each local authority to establish a Relevant Area(s) for admission policy consultations. The Relevant Area is the area in which admission authorities must consult with schools regarding their proposed admission arrangements before finalising them.

There is a legal requirement for the Local Authority to consult on and review its Relevant Area every 2 years.

The Relevant Area for the 2024-25 and 2025-26 academic years for all schools in the North Somerset area, is the geographical area of North Somerset Council, as indicated in the map below.



The consultation will run between 6 September and 18 October 2023. Please send all responses to [schooladmissions.officer@n-somerset.gov.uk](mailto:schooladmissions.officer@n-somerset.gov.uk).

All materials are designed to be accessible however if you require them in a different format, please don't hesitate to contact us.