



# Historic Environment Record

## User Guide

### Introduction to the HER

The Historic Environment Record, known simply as the HER, is North Somerset's primary historical information service.

It is used to inform planning and development decisions, as well as providing a useful tool for researchers interested in the physical evidence of the past. These may include commercial archaeologists and heritage professionals, university or other academic researchers, local history and heritage researchers, and employees of the council.

The North Somerset Historic Environment Record (NSHER) is a physical and digital database of heritage records with mapping from a Geographical Information System (GIS). Unlike a physical database, using a digital GIS means that the records are organised according to their layout on a map. Each monument or event has spatial data associated with it which accurately reflects its size and location. This data can be shared easily and reproduced accurately.

The database of heritage records includes many different types of 'monument'. These include find spots, excavated archaeological remains, standing buildings, and entire settlements, as well as natural features of historic importance. Designated heritage assets including listed buildings, scheduled monuments, registered parks and gardens, and locally listed sites are also recorded in their own categories.

The HER also includes a wide variety of 'events'. These cover all types of action which investigate the historic environment, such as desk-based assessments, remote sensing such as geophysical survey, archaeological monitoring and excavation, or building surveys.

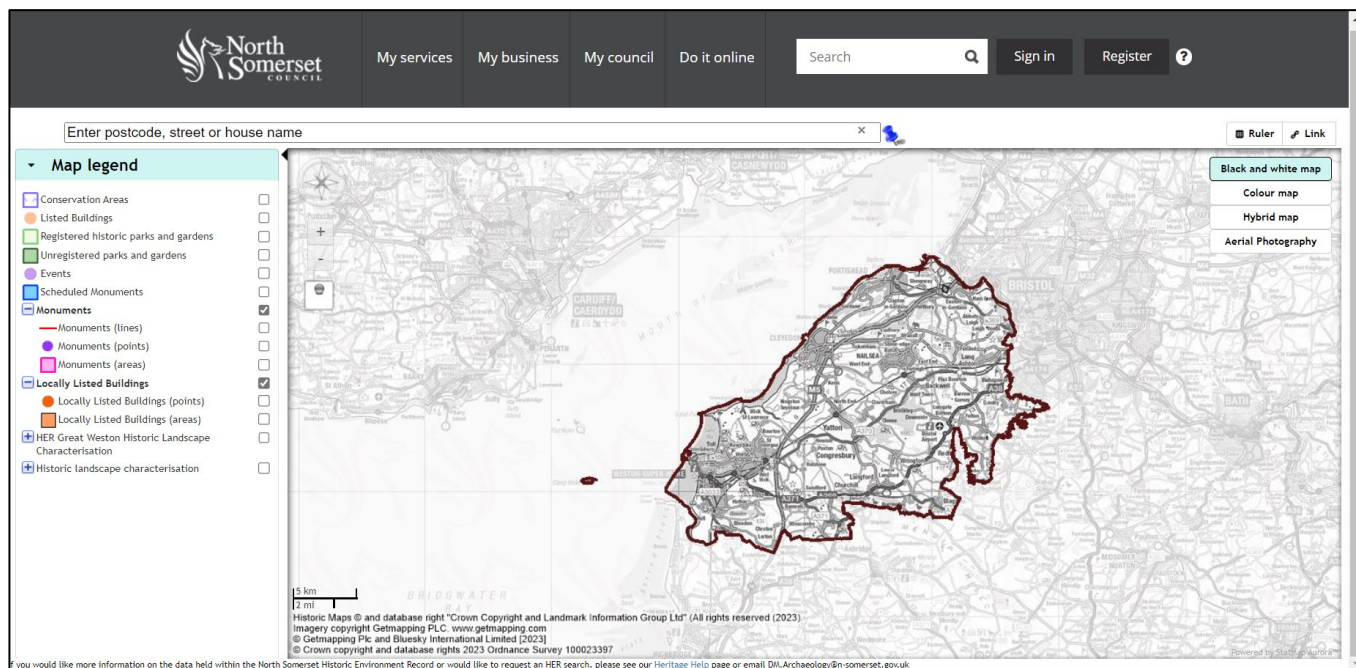
Alongside these are interpretations of the environment which cover wider areas, for example, Conservation Areas and Historic Landscape Characterisations.

All of these records are identified from a wide variety of sources. Published sources include books, journals, maps, and digital data sets. A large catalogue of unpublished reports also provides unique information, which includes commercial reports and works, and notes produced by independent researchers. Many of the unpublished records are available digitally through the Archaeology Data Service.

## HER Map Layers

To use the online HER map, open the following webpage: <http://map.n-somerset.gov.uk/her.html>

The first screen you see will be this:



You can select/unselect the different layers by checking each of the boxes shown above, and the information for that layer will be displayed on the map.

The different layers are:

- Conservation Areas
- Listed Buildings
- Registered historic parks and gardens
- Unregistered parks and gardens
- Events
- Scheduled Monuments
- Monuments
- Locally Listed Buildings
- HER Great Weston Landscape Characterisation
- Historic Landscape Characterisation

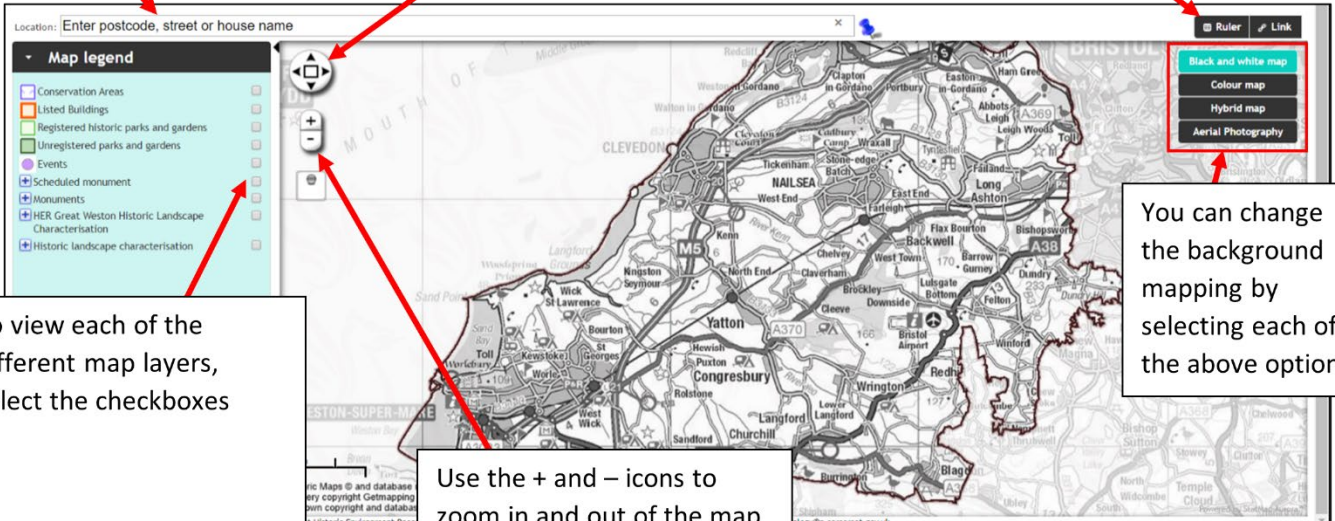
Each of the layers will be discussed in more detail in this document.

## Navigating the map

To find a specific location, enter a postcode, street or house name here

Navigate the map by either using the arrows, or you can drag the map by clicking and holding the left button on your mouse in a particular direction

Select the 'Ruler' function to measure distances and areas on the map



To view each of the different map layers, select the checkboxes

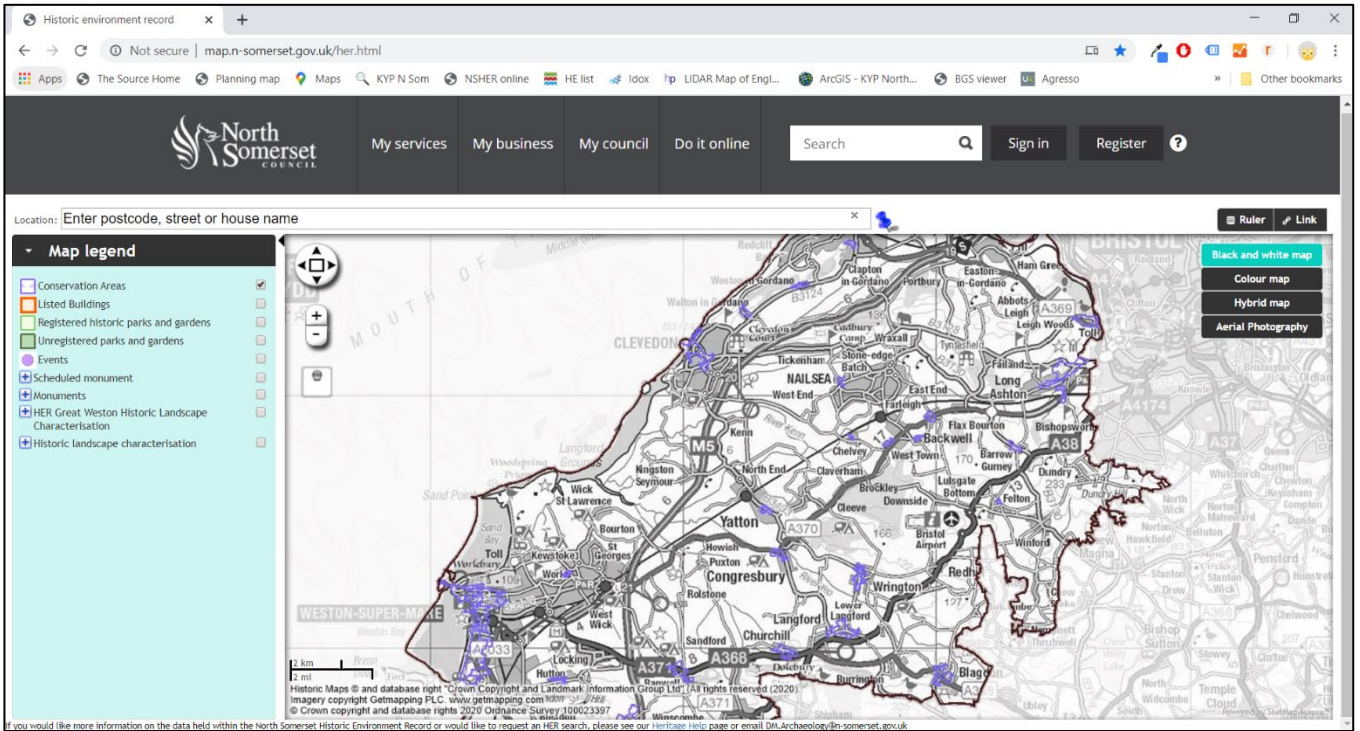
Use the + and - icons to zoom in and out of the map.

You can also use the scroll

You can change the background mapping by selecting each of the above options

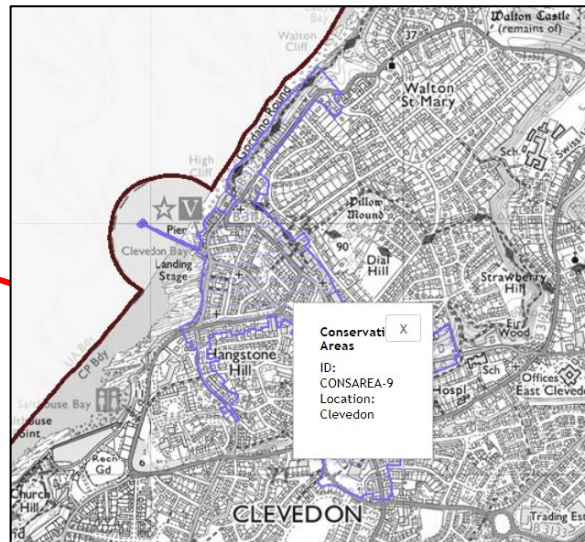
## Conservation Areas

All 33 Conservation Areas in North Somerset are mapped on the HER. Conservation Areas offer an additional layer of protection to historic settlements. The special character of these areas does not come only from the quality of their buildings. Elements such as the historic layout of roads, paths and boundaries and characteristic building and paving materials all contribute to the familiar and cherished local scene.



Click on an area highlighted in purple and the following information will be provided:

- ID
- Location



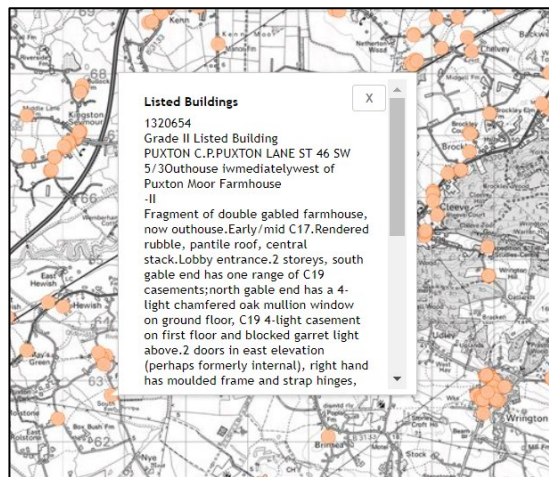
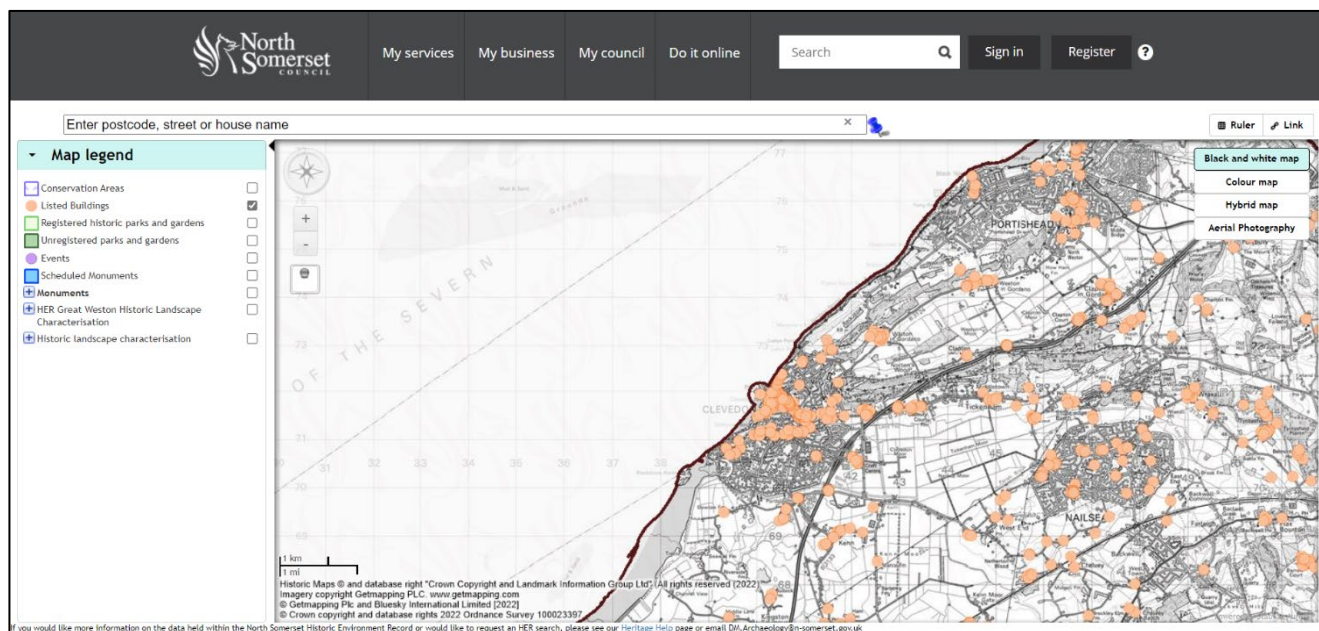


## Listed Buildings

There are 1,076 Listed Buildings in North Somerset, and they are all mapped on the HER. Buildings are listed to mark their special architectural and historical interest. The older a building is, and the fewer surviving examples of its kind, the more likely it is to be listed.

In North Somerset there are:

- 35 Grade I (buildings of exceptional interest)
- 79 Grade II\* (particularly important buildings of more than special interest)
- 962 Grade II listed (buildings of special interest)



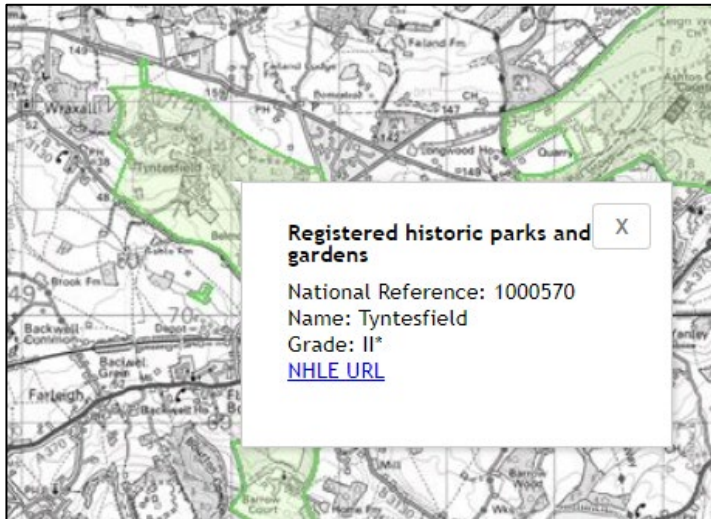
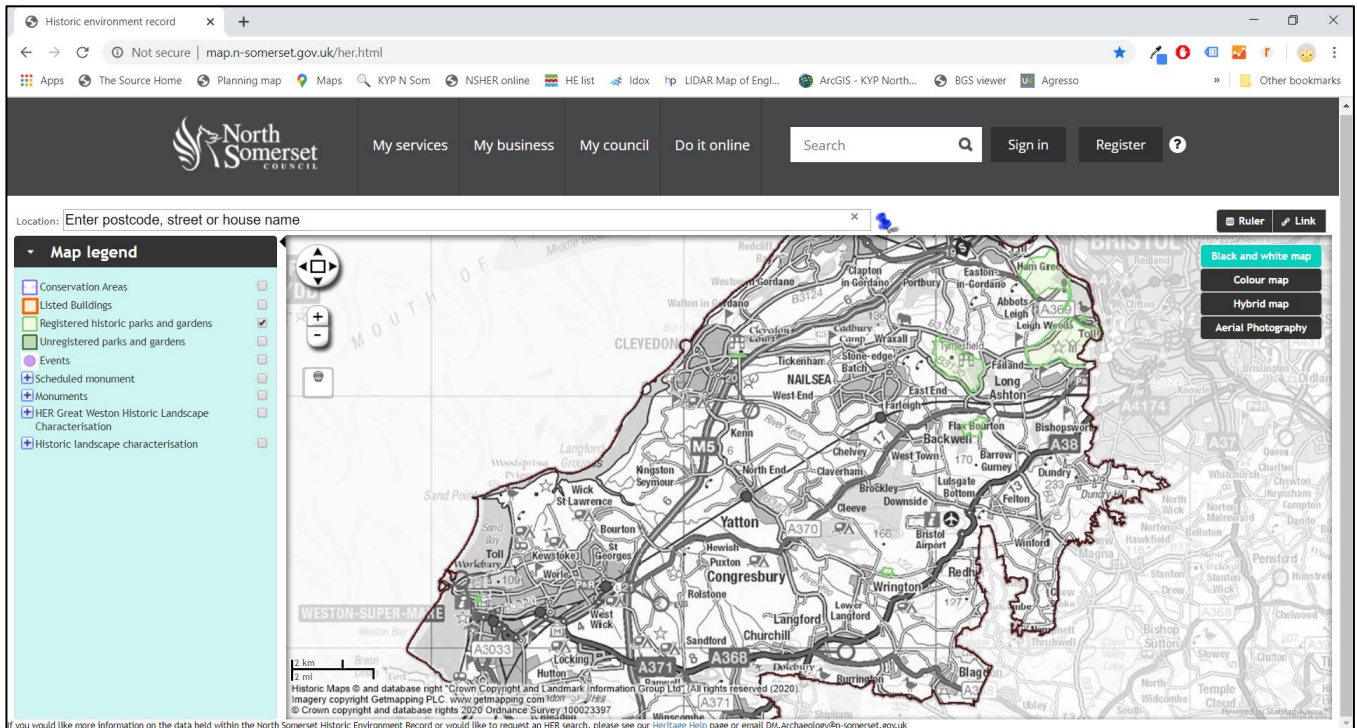
Click on an orange dot and the following information will be provided:

- National Heritage List for England (NHLE) reference
- Listing Grade
- Name of listed building or structure
- Description
- NHLE link to listing summary on Historic England’s website

You can also click the link which will take you to Historic England’s website for information on listed buildings.

## Registered Historic Parks & Gardens

There are 8 Registered Historic Parks and Gardens in North Somerset, and they are all mapped on the HER.



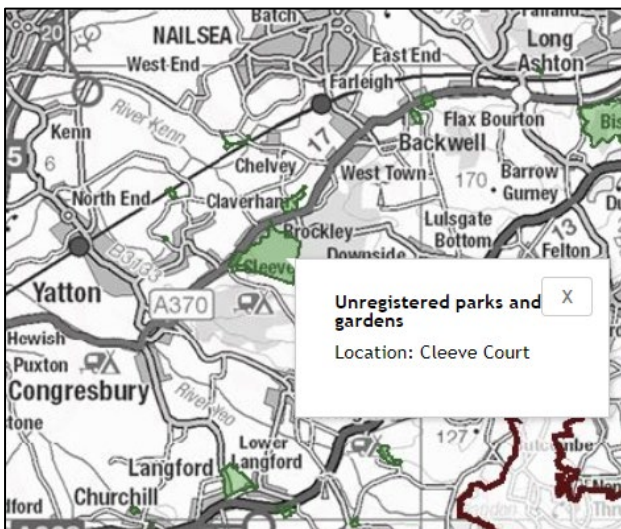
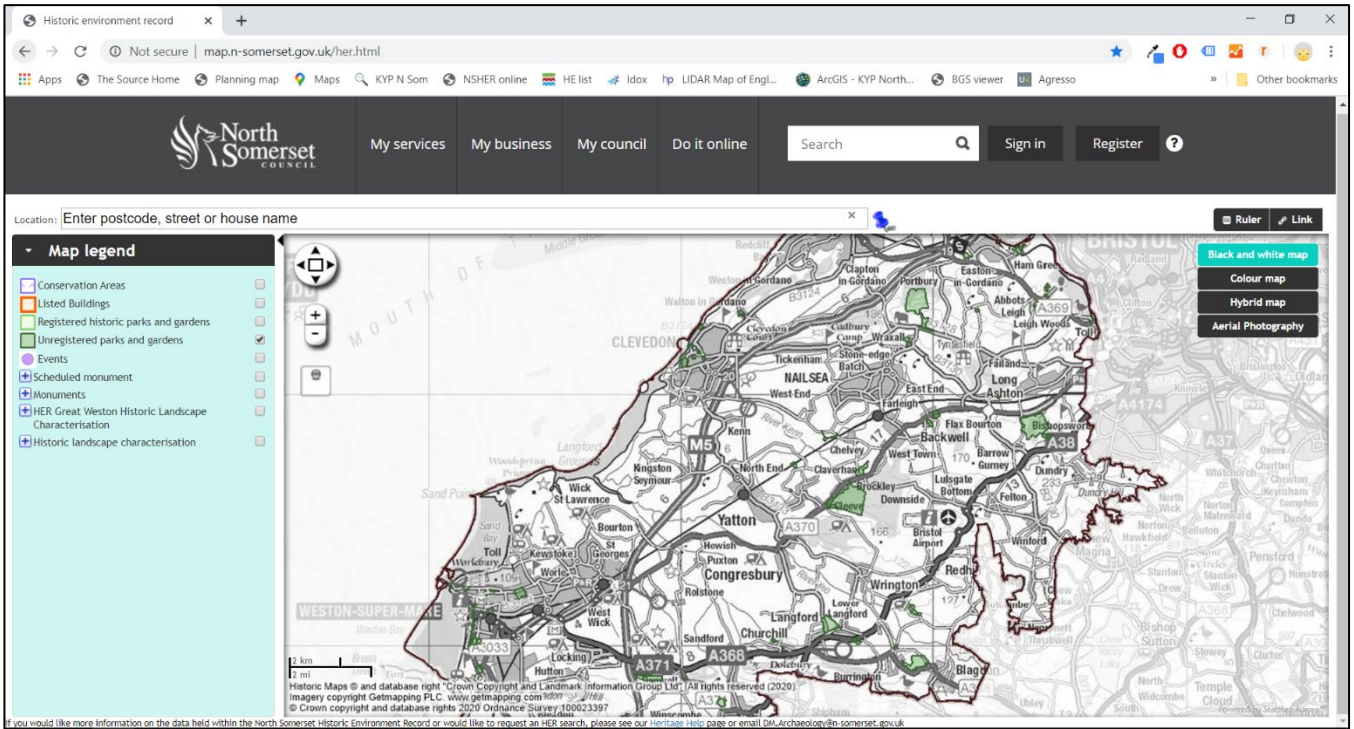
Click on an area highlighted in light green and the following information will be provided:

- National Heritage List for England (NHLE) reference
- Name
- Grade
- Link to NHLE listing description (Historic England website)



# Unregistered Parks and Gardens

There are 58 Unregistered Parks and Gardens in North Somerset, and they are all mapped on the HER.

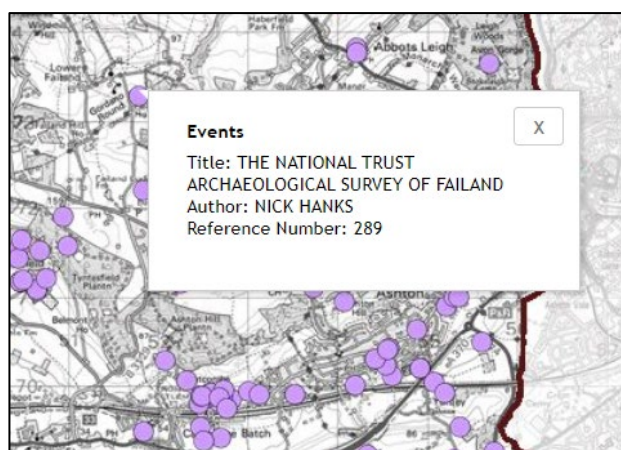
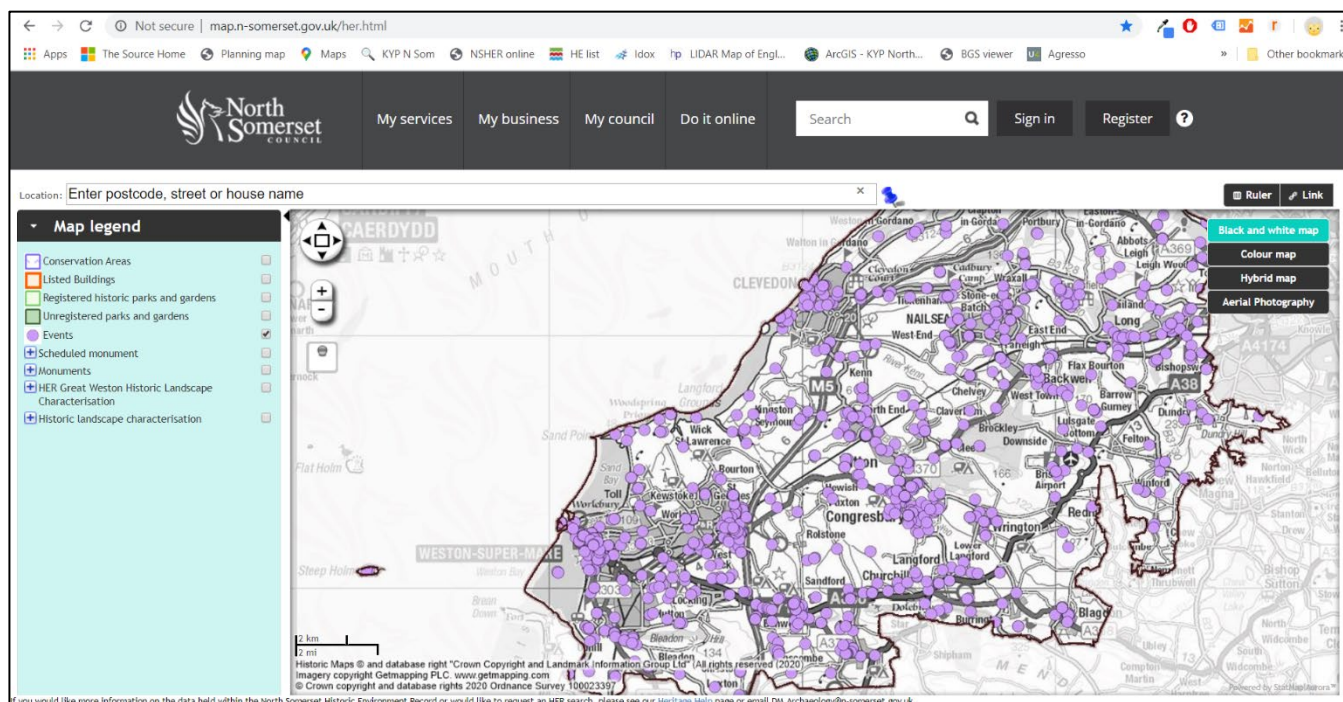


Click on an area highlighted in dark green and the following information will be provided:

- Location

## Events

‘Events’ are recorded activities such as geophysical surveys, building records, excavations and desk-based assessments – all involving the collection of information or judgements about monuments or buildings at a particular location. They can provide positive or negative results, and all are mapped in the NSHER.



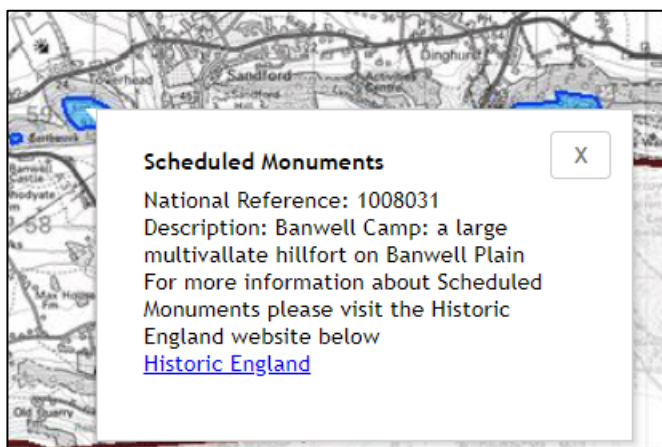
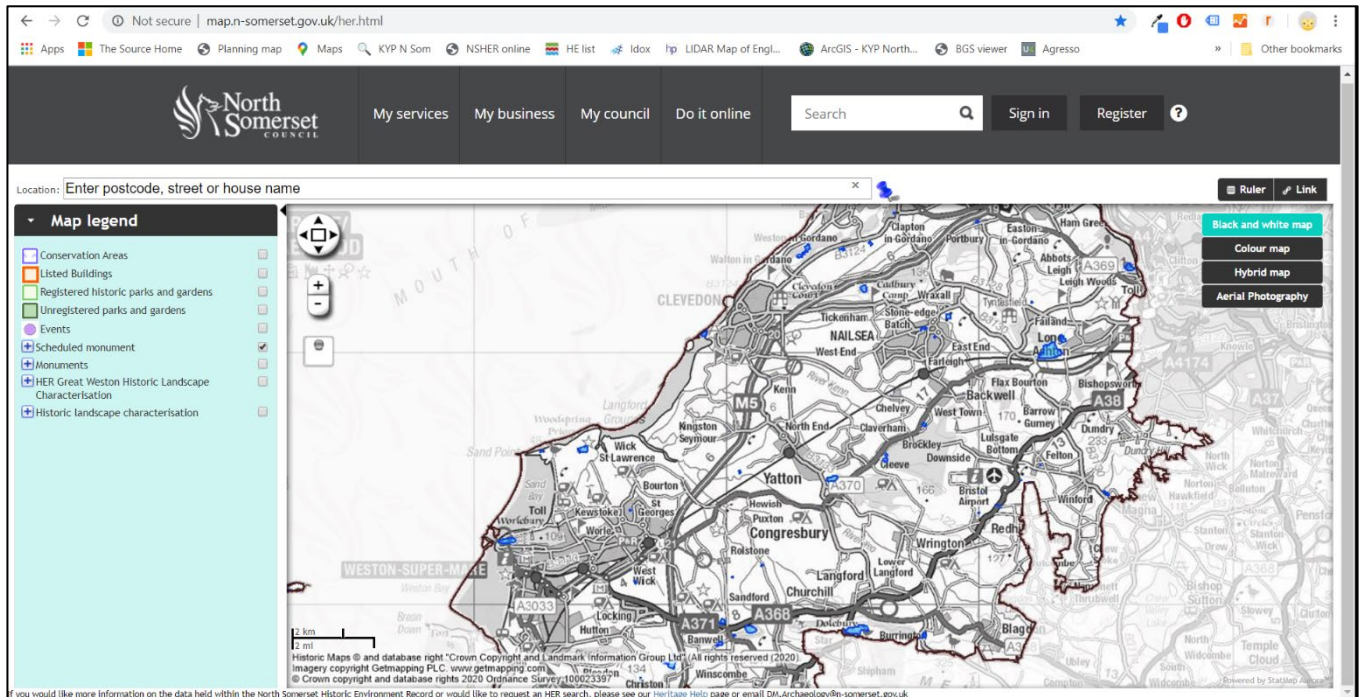
Click on purple dot and the following information will be provided:

- Title
- Author
- Reference number (relating to the NSHER catalogue)



## Scheduled Monuments

There are 68 Scheduled Monuments in North Somerset, ranging from Neolithic burial chambers to Iron Age hillforts, deserted medieval settlements to post-medieval duck decoys.



Click on an area highlighted in blue and the following information will be provided:

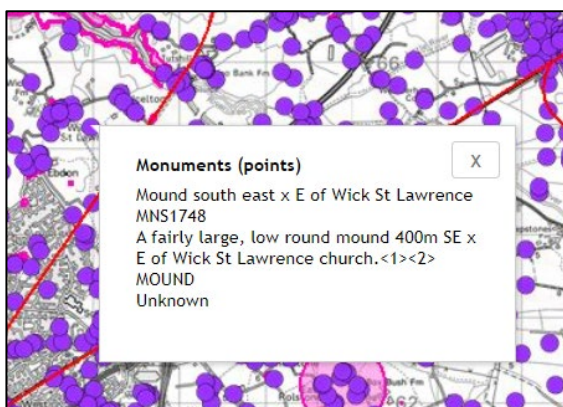
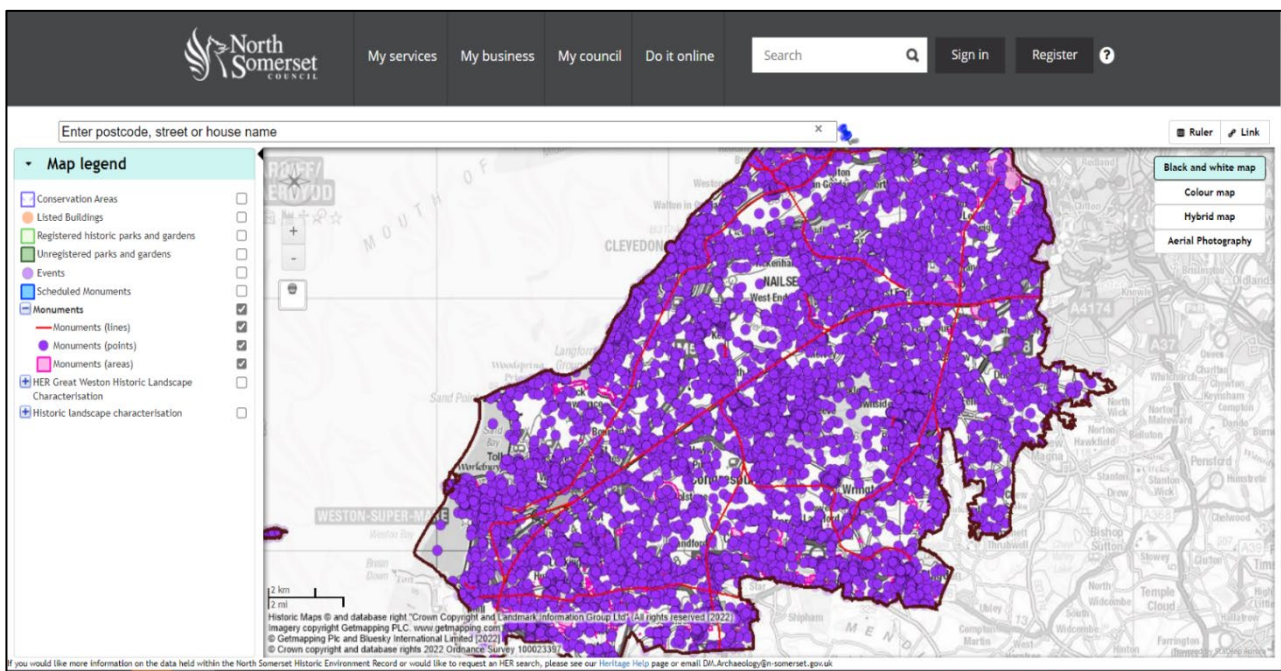
- National Reference (National Heritage List for England)
- Description
- Link to the listing description

You can also click the link which will take you to the list entry on Historic England's website.

## Monuments

The term 'monuments' covers a diverse range of features that vary widely in their nature, date, function and form. Almost any structure or deposit of man-made origin can be classified as a monument, submerged, buried or standing proud. These take many forms, for example earthworks, standing structures, buildings, cropmarks, sub-surface deposits, industrial complexes, component features of buildings, elements of archaeological sites, artefacts, artefact scatters, find spots and destroyed sites known from documentary sources.

There are over 9,000 'monuments' recorded in North Somerset. They are mapped as points, lines and polygons. You will need to select all 3 of the sub-layers to show all Monument records on the map, as below.



Click on purple dot and the following information will be provided:

- Monument name
- Monument Unique Identifier
- Description
- Monument Type
- Period

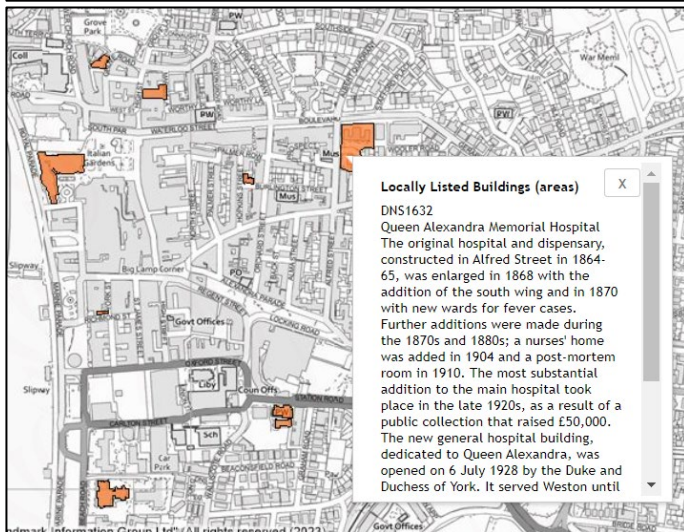
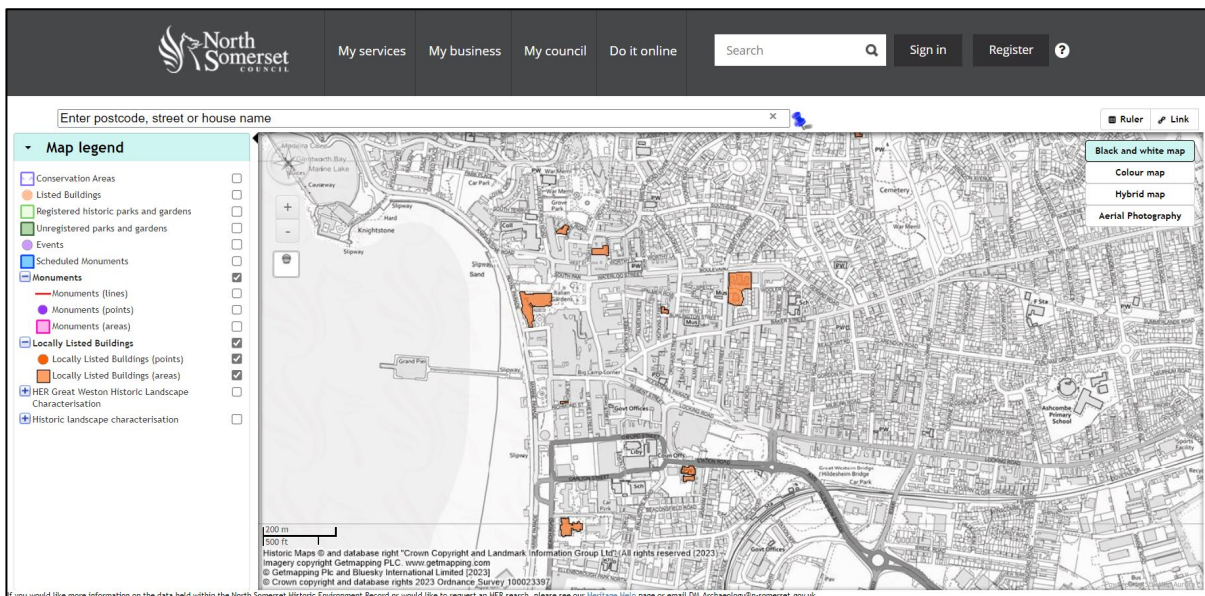


## Locally Listed Buildings

The Local Heritage List is a way for local communities to celebrate the unique history that makes an area special. It is a collection of heritage assets that are not protected by law, like Listed Buildings or Scheduled Monuments.

The list can include items not considered to be of national significance, such as:

- historic buildings
- archaeological sites
- parks and gardens



Find out more about the local list and how to nominate sites for inclusion: [www.n-somerset.gov.uk/localheritagelist](http://www.n-somerset.gov.uk/localheritagelist)

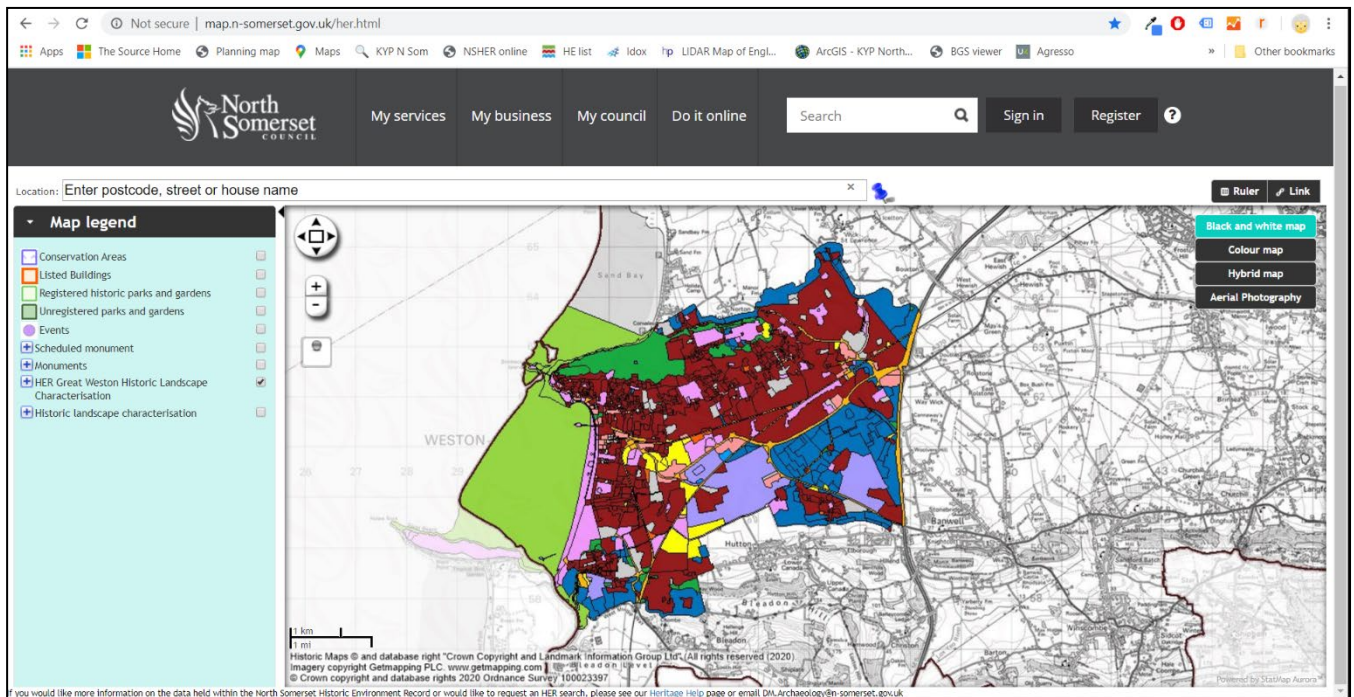


## HER Great Weston Historic Landscape Characterisation

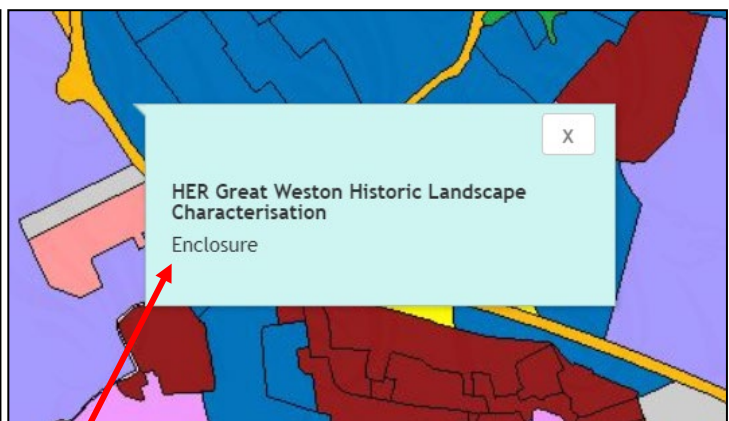
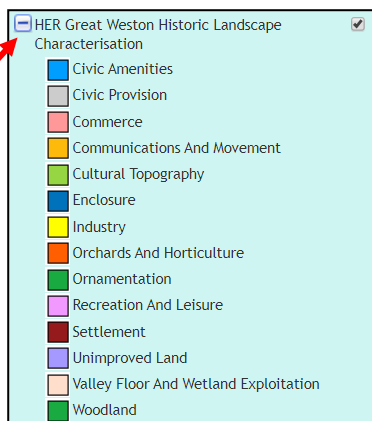
This layer was created as a result of a project undertaken by consultants for the Great Weston Heritage Action Zone.

The report can be found here:

<https://archaeologydataservice.ac.uk/library/browse/issue.xhtml?recordId=1161743&recordType=GreyLitSeries>



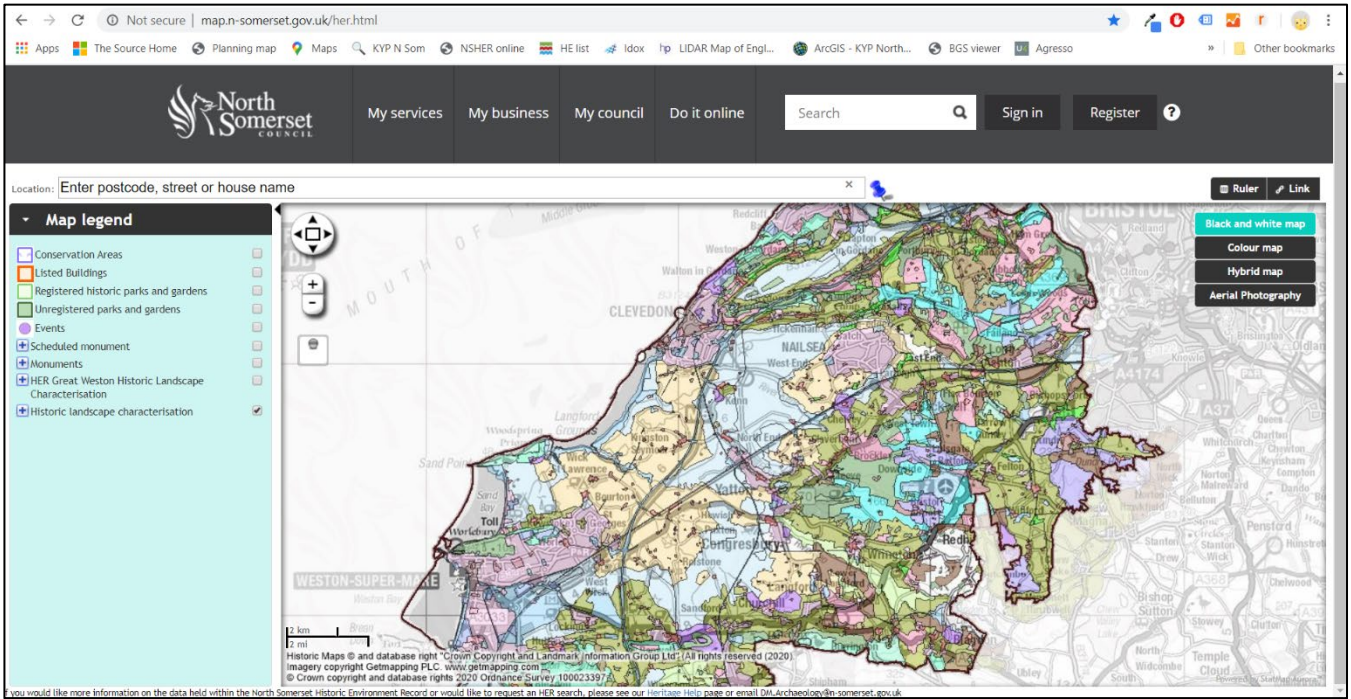
Select the + icon to expand the key for the layer



Clicking on a section on the map will bring up the type of landscape characterisation for that area

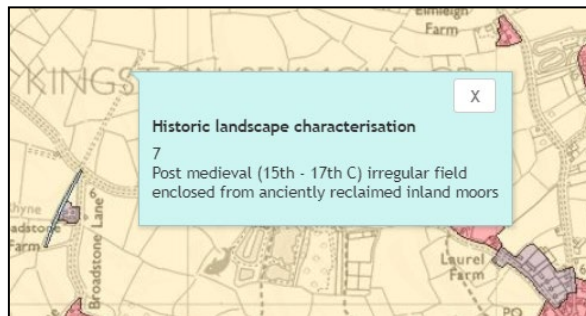
# Historic Landscape Characterisation

The Historic Landscape Characterisation of the former Avon counties was undertaken between 1995 and 1998. The main aim was to produce a map which displayed the character of the landscape by revealing the historic processes whereby the present plan form of the current landscape had been initiated and developed.



Select the + icon to expand the key for the

- Historic landscape characterisation
- 18th - 19th century enclosure by local and parliamentary act
- 19th C ('Extended' or 'Infill')
- 20th C ('New' or 'Modern')
- 20th century leisure and sports development
- Ancient unenclosed
- Ancient unenclosed coastal 'Warths', beaches and cliffs
- Ancient unenclosed commons
- Core settlements
- Large scale utility landscapes
- Late medieval enclosed open fields created by local arrangement and exchange
- Late medieval enclosure of steep-sided cultivation
- Medieval (or earlier) enclosure of rich, wet grassland
- Medieval and Post-medieval organised enclosure of open heath
- Medieval enclosed fields created by assart
- Medieval enclosed fields created by organised clearance
- Medieval or earlier irregular enclosed fields
- Post-18th century woodland plantation and forestry
- Post medieval (15th - 17th C) irregular field enclosed from anciently reclaimed inland moors
- Post medieval (15th - 17th C) organised enclosure of anciently reclaimed inland moors
- Post medieval (18th - 19th C) parliamentary (or similar) enclosure
- Post medieval (18th - 19th C) parliamentary enclosure
- Post medieval (18th - 19th C) parliamentary enclosure or reclamation of inland peat moors and common
- Post-medieval and modern fields adjusted from earlier (i.e.A1) enclosures
- Post-medieval designed ornamental landscapes
- Post-medieval fields created from enclosure of medieval parkland
- Pre 1800 'ancient woodland'



Clicking on a section on the map will bring up the type of landscape characterisation for that area

## **Requesting information from the North Somerset Historic Environment Record**

If you have found an interesting site or building on the online HER, you can look at Know Your Place (<https://maps.bristol.gov.uk/kyp/?edition=nsom>) for historic mapping which may be of interest or help with a research project.

You can also contact the HER directly by emailing [DM.Archaeology@n-somerset.gov.uk](mailto:DM.Archaeology@n-somerset.gov.uk), or requesting information via our website.

Requests for information from the NSHER for academic or local history research carry no fee, but if there are large amounts of data being requested a small fee may be incurred for officer time.

**Don't forget to send your own research reports or documents to the NSHER so they can be added to the database for others to search!**