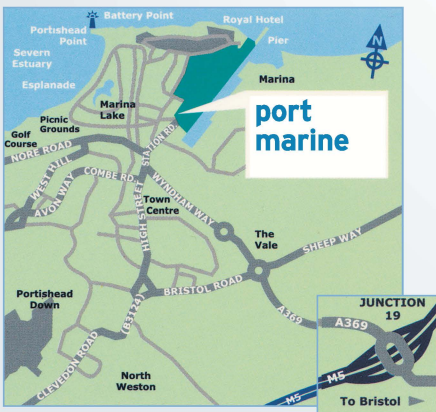


# port marine, portishead public art map

TOWARDS  
HIGH STREET



# port marine, portishead public art map

for more information on  
the public art programme, please see:  
[www.publicartportishead.co.uk](http://www.publicartportishead.co.uk)



**1 'Starting Point  
'Riddle of  
the Stones'  
Teān Kirby**



**9 Gates & Fencing  
to Portishead  
Primary School  
Matthew  
Fedden**



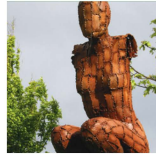
**14 'Topping Out'  
Michael Disley**



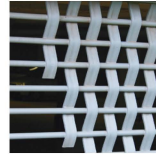
**21 'Elemental'  
Matt Stein**



**2 'When Shall We  
Three Meet  
Again...?'  
Robert Stuart  
Clamp**



**10 'Crouch'  
Rick Kirby**



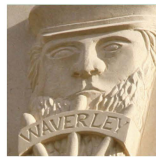
**15 'Grilles to  
Car Park'  
Matthew  
Fedden**



**22 'Arch'  
Rick Kirby**



**3 'Flying'  
Lucy  
Glendinning**



**11 'Captain  
Ashford'  
Michael Disley**



**16 'Echo'  
Rick Kirby**



**23 'Fallen Nails'  
Cod Steaks**



**4 'Energy Artwork'  
Mark Merer**



**12 'Towards  
the Sky'  
Ann  
Christopher RA**



**17 'Arc of Angels'  
Rick Kirby**



**24 'Knightstone  
Community  
Project'  
Sue Pearce**



**5 'Viaggio'  
Louise Plant**



**13 'Gordano  
Hockey Club'  
Michael Disley**



**18 'Sculptural  
Garden'  
Forge Projects**



**25 'Precious'  
Carol Peace**



**6 'Ship to Shore'  
Jon Buck**



**13 'National  
Nautical School'  
Michael Disley**



**19 'Denny  
Shoal Arch'  
Matthew  
Fedden**



**26 'Man and  
Animal'  
Giles Penny**



**7 'Full Fathom  
Five'  
Michael  
Dan Archer**



**13 'Portishead  
Lifeboat Trust'  
Michael Disley**



**20 'The Bristol and  
Portishead Pier  
and Railway Co  
1867'  
Michael Disley**



**27 'Splash'  
Cod Steaks**



**8 'Timelines'  
Marianne  
Forrest**



**13 'Miss England'  
Michael Disley**



**20 'The Lady Sings'  
Michael Disley**



**28 'Ox'  
Jason Lane**

This landmark public art trail has been initiated and sponsored by the following:



**PERSIMMON**  
Together, we make a home

