

North Somerset
Life

Nov/Dec 2015 ISSUE 128

Winter
special

Winter
is on
its way



www.n-somerset.gov.uk

Free internet access at your library



For more details visit www.weston.ac.uk/openevents or call 01934 411 411



Dear reader,

The fantastic, disturbing, provocative Banksy show is over and, whatever your views of it, it was a huge success and boost for North Somerset, especially Weston-super-Mare.

We had visitors and TV and radio coverage from around the world and over the five weeks, 200,000 people saw the exhibition, with many more travelling to Weston despite not having a ticket. It is estimated to have added at least £15m

to the local economy and has shown Weston to be the place to visit. I was amazed by the reaction and have had wonderful comments from visitors and local companies, many of whom were curious about how we kept it secret for so many months while details were worked out.

More importantly, it proves that the site can be used for shows and activities and we already have offers for the next few months. It is time we moved on and I am convinced we will be able to create another attraction for the region. Thank you to everyone who helped make the show an unforgettable experience.

News that the planning minister has ignored our view of housing needs in North Somerset was very difficult to understand and bitterly disappointing.

For at least 18 months we travelled to London with researched evidence and expert advisers. While many of our comments seemed to be accepted at the time, they have been dismissed and any notion of local decision-making abandoned.

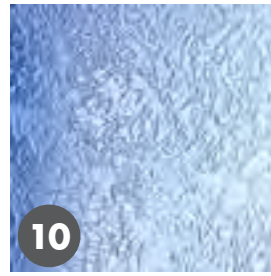
Yes, we want to protect our towns and villages and countryside but always accepted that we need to provide more housing. But we disagree on the numbers and continue to insist that we cannot just build houses, we must build communities. That means providing schools, medical centres, roads and shops. It means not allowing developers to take years to build houses without infrastructure when they argued there was a real need for the housing in the first place. I will continue to argue with civil servants that developers should be forced to build and pay council tax on the houses they have been granted permission for. At least that would make a contribution to local services.

We have all seen the awful pictures of refugees fleeing Syria and many residents have asked what the council is doing to help.

We have no say over who is allowed into this country and have to wait for the Government to decide details. But just dispersing individuals around the country would probably not be very kind or practical and there needs to be adequate accommodation, schooling and health provision readily available.

We are advised that the best way to help those genuine refugees at the moment is to support the settlements building up on the borders of neighbouring countries, who are struggling to provide for so many. Our local voluntary organisation VANS is developing its website to link to established agencies who are already helping. If you would like to help in some way visit www.vansweb.org.uk or call 01934 416 486.

Councillor Nigel Ashton, Leader of North Somerset Council



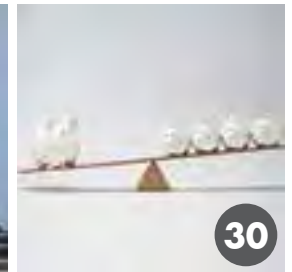
10



16



24



30

Contents

4 News update

Winter Special

10 Get prepared for winter

12 Recycling round-up

13 Drive safely

14 Stay well this winter

16 Dismaland picture special

19 Future housing policy

24 Walk – Street art trail around Weston

30 Budget round-up

40 Keeping children and young people safe

42 Festive recycling

47 Contact details

This publication is available in large print, Braille or audio formats on request. Help is also available for people who require council information in languages other than English.

Life editor: 01275 884 139

Apply for school places

Applications can now be submitted if your child is due to start or transfer school next year.

Children born between 1 September 2011 and 31 August 2012 can start at a primary or infant/first school from September 2016.


The closing date for applications is Friday 15 January. Parents of children due to transfer to a junior or middle school should also apply by this date.

Applications must be made by the closing date otherwise they may not be considered in the first round of allocations and have less chance of being offered their preferred school.

Parents can name up to three preferences and may apply for schools both within and outside North Somerset.

Apply online at www.n-somerset.gov.uk/admissions. Paper forms are available from School Admissions and Transport Team, North Somerset Council, Town Hall, Weston-super-Mare BS23 1UJ.

Any parents of children who are due to transfer to a secondary school, upper school or new Year 10 provision next September who have not yet applied can still do so. Paper application forms must be returned as soon as possible.

 01275 884 078 / 884 014 • admissions@n-somerset.gov.uk



Government praises childcare funding levels

More than 80 per cent of eligible two-year-olds are benefitting from free childcare in North Somerset.

About 540 two-year-olds are now accessing free early learning sessions in a nursery, pre-school or childminding setting.

North Somerset Council's performance is well above the national average of 63 per cent and the council has been praised by the Government for being the best performing authority in the South West.

 To find out if your child is eligible for funding visit www.n-somerset.gov.uk/fis

Free advice for homeowners planning alterations

Which? Mortgage Advisers

Homeowners in North Somerset who are planning major alterations or extensions to their properties can get a host of free advice this month.

The Extension Convention, organised by North Somerset Council, will be a one-stop-shop for homeowners thinking of undertaking major projects.

The event runs from 2pm to 8pm at the Winter Gardens, in Weston-super-Mare, on Tuesday 24 November.

Planning and building control professionals will be on hand to explain the critical steps in obtaining necessary consents and completing your project, to save you time and money in the long-run.

General advice about adapting homes for disabled people, flood prevention, fire safety and more will also be available.

In addition, Which? mortgage advisers, part of consumer champion Which?, will be there to give guidance on how to finance house alterations through a mortgage.

Entry is free and there is no need to book. Just turn up any time between 2pm and 8pm.

 For more information call: **01275 888 811**



Advice and help to keep your home warm

Advice and help is available to people in North Somerset who may be struggling to stay warm and manage their energy bills.

The Home Heat Helpline is a free and confidential helpline which can offer advice to callers and put them in touch with other organisations and services, such as schemes offering financial support towards a new boiler, better insulation for homes,

or a £140 rebate on their electricity bills.

Home Heat Helpline has helped more 450,000 people since it launched 10 years ago.

i Home Heat free helpline:
0800 336 699
www.homeheathelpline.org.uk



Automated switchboard coming soon

An automated telephone switchboard will soon be coming to North Somerset Council as part of its improvement programme.

This new system will improve speed and accuracy by directing callers to the person or service they want without the need to go through the Council Connect team first.

If you cannot find the person or team that you are looking for, or don't know who to ask for, you will be quickly be put through to someone who can help.

To use the new switchboard, just call **01934 888 888**, say the name of the person or team you want to speak to, and the system will automatically connect you.

i If you have questions or feedback about the new switchboard, contact customer services: **01934 426 826**
customer.services@n-somerset.gov.uk

Top up your oil tank before Christmas

Residents in North Somerset with domestic oil tanks are being urged to top them up sooner rather than later to avoid an expected winter price hike.

Local charity the West of England Rural Network runs a community oil buying scheme to save people money by placing a collective order once a month.

The organisation is also offering free memberships to over-70s in the West of England thanks to a grant from the Quartet Community Foundation.

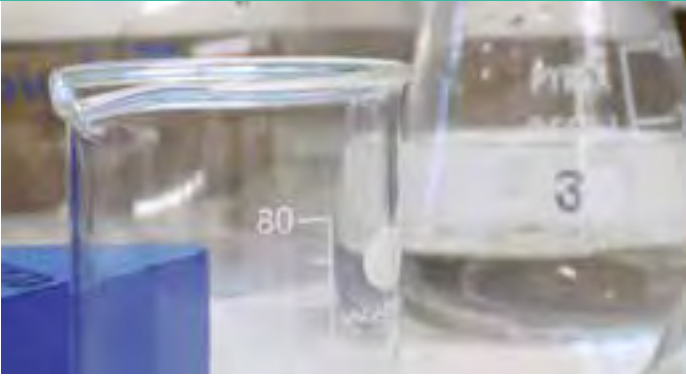
Scheme co-ordinator Jill Baker said: "Oil prices tend to rise in winter as demand increases so by placing a single large order, we can negotiate with suppliers and everyone pays less."



The average saving for a 1,000 litre order is about £45. Community buildings and local businesses can also take part.

Normal membership of the oil buying scheme is £20 per year.

i To join call **01275 333 701**
or visit **www.wern.org.uk/oil**



North Somerset laboratory achieves national accreditation

A highways material testing laboratory in Flax Bourton has achieved national accreditation for its scientific work.

The lab, which is owned and run by North Somerset Council, plays a crucial role in making sure that materials used on the district's roads are safe and durable.

The lab specialises in testing asphalt and stone as well as arranging tests of soil, concrete and paint, and testing surface dressing materials to make sure they are high quality.

Engineers use the data to understand how and why road surfaces can fail, and this information is then used when planning future highways schemes.

North Somerset is one of only a few local authorities to have their own materials laboratory and the accreditation, from the United Kingdom Accreditation Service (UKAS), shows that the systems and methods used meet the relevant British and European standards.

www.n-somerset.gov.uk/roads

Sign up to digital Life

News, features, events and more can be delivered straight to your inbox with the new digital digest of North Somerset *Life*.

The new bite-size edition complements the printed version and goes out in the months that the printed version does not.

To sign up visit www.northsomersetlife.co.uk

First aid volunteers needed

Volunteers are needed to help provide first aid cover for a variety of events across the area.

Local charity Wessex Ambulance Service is on the lookout for more people to join its team and help provide first aid cover for music events, family fun days, horse jumping and more.

No previous training in first aid is needed, just a willingness to learn.

The group trains every Monday from 7-9pm at Hutton Moor sports centre, in Weston-super-Mare.

For more information call: **07785 996 831**
www.wessex-ambulance-service.org



Properties available
 call 0117 949 4004



Time to explore your retirement living options?

Book a tour that suits your timetable and discover what the award-winning **Sandford Station** retirement village has to offer you.

You will be given the opportunity to view the wide range of facilities provided, including the Pullman restaurant, pool and gym, indoor and all-weather outdoor bowls,

as well as a variety of leisure activities and social events. For those with care needs, tailored care and support can easily be arranged.

Call 0117 949 4004 to book your place or find out more.
www.stmonicastrust.org.uk | info@stmonicastrust.org.uk



Delivering well-being
 Registered Charity 202151

St Monica Trust

Blagdon's big mosaic

More than 100 creative villagers in Blagdon have come together to produce a huge mosaic which depicts everyday life.

The Blagdon Mosaic, a 2.5 by 1.2 metre piece of artwork, has been made from thousands of tiny pieces of glass and stone which have been cut and shaped to create images of people and places.

The project launched last autumn with funding from the Addicott Estate and Mendip Hills Fund.



Inspiration came from resident Wendy Philips, who studied mosaic at college and has worked with a range of communities to develop cultural projects, including a fantasy garden mosaic in Chile.

The piece is a storyboard of village life with emblems of farming, fishing, shopping, church-going, school and sports.

The Blagdon mosaic is installed in the northern corner of the play area, overlooking Blagdon Mead.



Community banking comes to Clevedon

An ethical alternative to high street banks is now available in Clevedon.

Somerset Savings and Loans has opened a new branch at St John's Church Hall in Hillside Road.

The credit union, supported by Churches Together in Clevedon, offers savings accounts and loans up to £15,000 for people who live and work in Somerset.

It is a not-for-profit financial co-operative owned by its members.

The credit union is open every Thursday, from 11am to 1pm.

Clevedon Credit Union: 01275 390 650
www.somersetsavingsandloans.org.uk
mail@somersetsavingsandloans.org.uk

Financial support for community gardeners

Financial support is available for community gardening groups in North Somerset.

The Avon Gardens Trust can give a helping hand to groups who grow communal food for their community or who help those new to gardening to learn new skills.

The trust is keen to help communities make the best use of land available to them as well as to conserve historic uses.

For more information email:
news@avongardenstrust.org.uk
www.avongardenstrust.org.uk



Planning a strong and growing economy

Long-term growth across the West of England region will soon be under the spotlight when consultation begins on major development proposals for the next 20 years.

Anyone who lives and works in North Somerset, Bath and North East Somerset, South Gloucestershire and Bristol can put forward their comments about the early stages of a joint strategic plan for the area.

The West of England is a vibrant region with a thriving economy, outstanding environment, historic towns and cities, international visitor attractions, and good transport links.

However, homes are becoming increasingly unaffordable, there are areas of significant deprivation, congestion on roads, health and education inequalities and fewer jobs for young people.

Studies show that the West of England needs another 85,000 homes in the next 20 years – an extra 29,000 on top of those already planned for – and 88,000 jobs.

But the environment, green belt, wildlife and towns and villages also need protecting.

To address these issues, the four local authorities have joined forces to develop a new joint strategic plan (JSP).



The first part of this process is an 'issues and options' paper to help decide where the homes, businesses and transport should go, and the pros and cons of different approaches.

Everyone is now invited to have their say on this first stage.

Further consultation will then take place once the draft JSP is published in autumn 2016, and the final JSP is then due to be published in early 2018.


Alongside the JSP, a separate joint local travel plan is also being developed.

This will include detailed information about the transport packages and people will also get the chance to have their say about the options.

The preferred package will then be incorporated into the JSP.

Did you know?

- The West of England region is worth £26bn a year to the UK's economy
- 1.1m population and growing
- Highest number of start-up businesses of the UK's core cities
- Highest number of entrepreneurs per capita
- 90 per cent of people who work here live here
- Third strongest academic cluster in the UK

 To view the issues and options paper and make your comments, visit www.jointplanningwofe.org.uk

The consultation runs from **Monday 9 November to 5pm Friday 29 January 2016.**

For more information call **01934 426 775**



Preparing for winter

The great British weather is hard to predict – a sunny morning could lead to a blustery afternoon or icy evening.

Whether we will face snow, floods or strong winds this winter, officers from across North Somerset Council are gearing up for the months ahead.

Freezing roads, schools closing and recycling collections getting delayed are just some of the problems we could face if the temperature plummets.

So keep this guide close to hand for advice about what to do when the cold weather sets in...

Get instant updates

Emergency school closures, transport problems or disruptions to recycling collections will all be listed at www.n-somerset.gov.uk/disruption

The council's social networking sites will also be kept up-to-date.

 /NorthSomersetCouncil

 @NorthSomersetC



Snowy schools

Schools make independent decisions about whether to close or not based on local circumstances, such as icy roads nearby.

Many schools have systems in place to contact parents directly via text message or their own websites.

As well as this, the council website will have live information about closures as soon as possible. Visit www.n-somerset.gov.uk/disruption

Local radio stations will also have regular bulletins with details of the latest closures.



Pick up a good book

If you want to hibernate with a good book this Christmas then make sure you know when your local library is open before you head out into the cold.

Festive opening hours for North Somerset libraries are...

- Thurs 24 Dec – Mon 28 Dec – closed
- Tues 29 Dec – open as normal
- Weds 30 – open as normal
- Thurs 31 Dec – open until 5pm
- Fri 1 Jan – closed
- Sat 2 Jan onwards – open as normal



Snow wardens are needed to help keep local access routes clear when the weather gets tough.

Volunteer snow wardens help their communities prepare for winter by clearing sites such as local schools, village shops or doctors' surgeries.

Shovels and hi-vis vests are provided for free, as well as full training.

The next training sessions take place on:

- ❄️ **Thursday 12 November**, 1–2.30pm, Town Hall, Weston-super-Mare
- ❄️ **Wednesday 18 November**, 10–11.30am, Castlewood, Clevedon
- ❄️ **Thursday 26 November**, 10–11.30am, Castlewood, Clevedon



To register your interest email snow.warden@n-somerset.gov.uk or call **01934 426 322** with your name, contact information and preferred date.



Recycling round-up for severe weather

Heavy snowfalls and consecutive days of freezing conditions can cause serious disruption to recycling and waste collections.

The safety of pedestrians, road users and contractors all need to be considered when the roads are icy and driving conditions are hazardous so sometimes it is not possible to complete the usual schedule of collections.

North Somerset Council's contractor Kier has contingency and recovery plans in place to ensure it is prepared for any adverse weather.

And residents can help crews during a big freeze by moving their containers out at the right time.



Waste

Put your wheelie bin or grey council-issued bags out on your normal collection day. If it's not collected, then leave it out and crews will come back as soon as possible.

Green waste

Put your green waste bags out on your usual collection day. If they are not taken, take them back in and put them out again the following month on your scheduled day.

Extra vehicles may be used over Christmas to collect certain types of recycling, such as cardboard or glass.

Food caddy and recycling boxes

Continue to put these out on your normal collection day. If they are not collected by 7pm, take them back in and put them out again the following week on your normal collection day.

How you can help

- ❄ Put your recycling and waste out by 7am on your usual collection day. Check www.n-somerset.gov.uk/calendar
- ❄ If collections are missed from a whole street, there's no need for residents to individually report it as it will already be logged
- ❄ Check the council's website, Facebook and Twitter accounts for updates on services
- ❄ Separate recycling into individual materials within your box to help crews collect items quickly and more efficiently
- ❄ Remember to help neighbours who may have difficulties.



Drive safely when the temperature drops

Drivers are urged to plan ahead and be prepared for bad weather when they hit the roads this winter.

North Somerset Council has six gritter lorries which are on 24-hour standby throughout the winter to spread salt along the district's main routes – but drivers are still warned to take care in their car.

Salt is used instead of grit because it has de-icing properties. Grit is only effective as an abrasive to break down ice and snow.

The council's salt barn holds 2,000 tonnes, enough to treat 28,500 miles of road.

If snow falls overnight the council only has enough resources to focus on the main roads – the A370, A38 and A369. Major 'A' roads will be ploughed as a priority, followed by other strategic B and C roads.

North Somerset Council also salts key footpaths if prolonged sub-zero temperatures are forecast.

Salting routes in North Somerset



www.n-somerset.gov.uk/winterroads

Be prepared

- ❄️ Make sure your car or vehicle is well serviced and maintained.
- ❄️ Keep a 'winter weather kit' in your vehicle – a scraper, de-icer, warm clothes, torch and shovel. You might also want to take hot drinks with you.

When driving

- ❄️ Take care at untreated road junctions
- ❄️ Avoid harsh braking and acceleration
- ❄️ Maintain a safe stopping distance
- ❄️ Use dipped headlights in poor visibility
- ❄️ If you get into trouble, stay with your vehicle if possible until help arrives or give local police details if you have to abandon it.

Police non-emergency contact: 101

In an emergency:

999



Stay well this winter

Residents can take a few simple steps to stay healthy this winter as the cold weather bites.

A few practical suggestions can often make a big difference between remaining healthy or catching a cold or flu-like virus.

People can reduce their risk of catching bugs by washing hands frequently with soap and warm water, as well as covering their mouth and nose when coughing or sneezing, and disposing of used tissues quickly.

The flu vaccine remains the best and only real protection against flu. Some higher risk groups qualify for free jabs, such as those aged 65 or over, pregnant women, children aged two to seven, people with a long-term health condition, carers and people with a learning disability. See www.n-somerset.gov.uk/fightflu

People should consume warm food and drinks, heat homes to at least 18C and move about regularly to keep warm. If you know someone who may be affected by the cold, such as an elderly relative or neighbour, try to offer support.

Keep a well-stocked medicine cabinet and make the most of your local pharmacy for advice.

Natalie Field, North Somerset Council's interim director of public health, said: "Prevention is always better than cure and by following a range of simple steps, people can minimise their risk of infection, stay well and reduce the pressure placed on the NHS at this busy time of year.

"If you or your children feel ill then get help from your pharmacy first, Accident and Emergency is for life threatening and serious injury and illnesses only."

Don't go to A and E or call 999 unless it's an emergency. If you are in any doubt, call **NHS 111**.



Where to go for help

Don't be afraid to ask for help if you need it...

- Hot meals and snacks are delivered to hundreds of people across the area who struggle to cook for themselves. Call community meals: **01275 882 867**
- 24-hour peace of mind is available through the Carelink community alarm. Call Care Connect: **01934 888 801**
- Free flu jabs for eligible people are available at your local GP practice, or most pharmacies.
- Government advice about energy-saving measures is available from: **www.gov.uk/warmthiswinter**
- The Home Heat Helpline is a free service for people concerned about their energy bills: **0800 33 66 99** • **www.homeheathelpline.org.uk**
- A community oil buying scheme is available through the West of England Rural Network. Call **01275 333 701** • **www.wern.org.uk/oil**
- Genuine energy debt could be cleared through a grant. Call Talking Money: **0117 954 3990** • **www.talkingmoney.org.uk**
- People born on or before 5 January 1953 are entitled to the winter fuel payment. Call the helpline: **03459 151 515**
- People in receipt of certain low income benefits can get a Warm Home Discount on their electricity bill. Call **0345 603 9439**
- Limited funding is available for people on certain low income benefits or who live in certain areas of North Somerset. Contact the Centre for Sustainable Energy: **0800 082 2234** • **home.energy@cse.org.uk**
- Grants are available for vulnerable or low income households to get a free gas connection. Apply to Wales and West Utilities: **0870 1650 597** • **www.ieservices.org.uk**



Beat the bug

Don't get caught short by the highly-contagious winter vomiting bug during the next few months.

Norovirus is the most common stomach bug in the UK and it affects people of all ages.

It is transmitted by contact with contaminated surfaces, an infected person, eating contaminated food or drinking contaminated water.

The symptoms are very distinctive, with a sudden onset of feeling sick followed by forceful vomiting and watery diarrhoea.

Good hand hygiene is important to stop this virus spreading.

Wash your hands thoroughly with soap and water and dry them after using the toilet, before preparing food and eating.

Do not rely on alcohol gels as these do not kill the virus.

Most people will make a full recovery in one to two days. It is important to drink plenty of water, particularly young children and older people.

Do not visit A and E departments or GP surgeries with symptoms as this may spread the virus.

For more information and advice call the NHS on **111**, or visit **www.nhs.uk/norovirus** for an online symptom checker.

Dismaland.[®]

didn't disappoint

Weston-super-Mare became the centre of the contemporary art universe this summer when world-renowned graffiti artist Banksy opened his Dismaland bemusement park.

The world-famous exhibition featured a never-before-seen collection of Banksy satirical art and sculpture, as well as pieces by international artists such as Damien Hirst, Jenny Holzer and Jimmy Cauty.

It certainly put Weston on the map, with global media coverage, celebrity visitors, a buzz on social media, huge ticket demand, hotels solidly booked out with international guests, and local retailers reporting a big boost to their businesses.

About 200,000 people visited during its five-week run and Visit Somerset suggested it had pumped an extra £20m into the local tourist economy.

North Somerset Council worked closely with organisers to stage the exhibition and the council worked with Weston Town Council, the Business Improvement District and others to encourage Dismaland visitors to visit other local attractions while they were here.

Free street theatre entertained crowds during the exhibition's final weekend, courtesy of arts development charity Theatre Orchard, and a street art trail has been published which features work of local artists (see page 24).

Creating a lasting legacy for the town is now important and it is believed the Banksy effect will help kick-start a much stronger arts and cultural sector in Weston.

Plans are already in place for other events and exhibitions at the old lido, along with ideas for establishing a permanent creative hub for start-up businesses and artists.

Look out in local media and online for any announcements.







© Crown copyright and database rights 2015 Ordnance Survey 100023397 • You are not permitted to copy, sub-license, distribute or sell this data to third parties in any form.

Connecting new communities

Access to a major development site in Weston-super-Mare will be improved when a new link road gets the go-ahead.

A planning application for the new North South link road is due to be submitted to North Somerset Council in December.

The 2km stretch of road will run from the A370 West Wick roundabout, through Parklands Village, to the A371 near Locking.

The road is part of the council's Weston Villages and Junction 21 Enterprise Area projects, which will see nearly 6,200 new homes built and 10,000 jobs brought to the area.

Community facilities in Parklands Village will include three primary schools, a doctors surgery and community halls, and the link road

will play a vital role in helping residents access these services.

Building the road during an early stage in the Parklands Village development means that the impact on existing roads will be reduced as the developments are built.

It means businesses will be more attracted to the Enterprise Area because employment plots are 'ready to go' and easily connected to the M5 and destinations such as Bristol Airport.

The scheme includes improvements to the West Wick roundabout, a traffic light-controlled pedestrian crossing on the A371, and improved lighting of the A370 subway.

This will make it easier for people to travel to facilities outside Parklands Village, such as Locking Castle district centre.

Improved public transport will be incorporated, including bus stops and walk and cycle routes along the length of the road.

Green spaces will be provided along the route and development will protect local ecology and heritage, including the Grumble Pill rhyne and motte and bailey scheduled monument.

Funding has been agreed in principle by the West of England Local Enterprise Partnership. Full funding is subject to securing planning consent. It is hoped the road will open in summer 2017.

Planning a strong and growing economy

Long-term growth across the West of England region will soon be under the spotlight when consultation begins on major development proposals for the next 20 years.

Anyone who lives and works in North Somerset, Bath and North East Somerset, South Gloucestershire and Bristol can put forward their comments about the early stages of a joint strategic plan for the area.

The West of England is a vibrant region with a thriving economy, outstanding environment, historic towns and cities, international visitor attractions, and good transport links.

However, homes are becoming increasingly unaffordable, there are areas of significant deprivation, congestion on roads, health and education inequalities and fewer jobs for young people.

Studies show that the West of England needs another 85,000 homes in the next 20 years – an extra 29,000 on top of those already planned for – and 88,000 jobs.

But the environment, green belt, wildlife and towns and villages also need protecting.

To address these issues, the four local authorities have joined forces to develop a new joint strategic plan (JSP).



The first part of this process is an 'issues and options' paper to help decide where the homes, businesses and transport should go, and the pros and cons of different approaches.

Everyone is now invited to have their say on this first stage.

Further consultation will then take place once the draft JSP is published in autumn 2016, and the final JSP is then due to be published in early 2018.


Alongside the JSP, a separate joint local travel plan is also being developed.

This will include detailed information about the transport packages and people will also get the chance to have their say about the options.

The preferred package will then be incorporated into the JSP.

Did you know?

- The West of England region is worth £26bn a year to the UK's economy
- 1.1m population and growing
- Highest number of start-up businesses of the UK's core cities
- Highest number of entrepreneurs per capita
- 90 per cent of people who work here live here
- Third strongest academic cluster in the UK

 To view the issues and options paper and make your comments, visit www.jointplanningwofe.org.uk

The consultation runs from **Monday 9 November to Sunday 31 January 2016.**

For more information call **01934 426 775**

Tapping into the off-shore oil industry



An enterprising start-up engineering and consultancy business based in Weston-super-Mare is making waves in the off-shore oil and gas industry.



Abersea Engineering launched less than two years ago within Junction 21 Enterprise Area and now exports its services around the world.

Life spoke to founder and engineering director Barry Canfield to find out more...

In a nutshell, what do you do?

Abersea Engineering provides electrical, hydraulic and software control systems to the oil and gas industry, specialising in drilling and subsea controls.

We provide a complete solution, starting with an initial consultation, project management, design, manufacture, installation and then commissioning on the client's off-shore facility. Once a system is operational, we can provide on-going maintenance.

How was the company established?

Starting Abersea Engineering realised my long-held ambition to go it alone.

The oil industry is dominated by established global companies who are supported by many smaller companies providing niche services and products. Having worked for several of the larger companies, I knew there was an opportunity to enter the off-shore market and grow quickly. Although we are still a small company, operating only for a short time, we have already won projects well above our weight.

How long have you been operating?

I formed the company in early 2014 and five months later my long-time friend Scott joined as sales director. Scott was key to its success as he was based in Aberdeen and brought a network of contacts. Although operating from two locations burdened our start-up with additional costs, it quickly turned to our advantage. Scott developed the sales and marketing while I concentrated on the engineering and day-to-day activities.



What were the benefits of being at The Hive?

When I initially looked for office space in the area I came across The Hive, which was still under construction. Even then, I could see it was going to be a super facility, so I committed to a small office and moved in shortly after it opened. The Hive was ideal for us as a start-up and we made full use of the reception and meeting rooms. We quickly outgrew the small office and moved to a bigger one. However, as more deliveries started arriving it was obvious we needed storage and workshop facilities so sadly had to leave.

We currently have office and workshop space in Weston-super-Mare but if our growth continues, we will definitely move back to Junction 21 Enterprise Area, hopefully into a new, purpose-built facility.

For us this area has so much to offer, especially the transport links. I can easily get to the M5, London and Aberdeen. We can see our suppliers face-to-face. Businesses in this area can offer everything we need and we are building a very strong supply chain.

How important is Abersea Engineering to the local economy?

The skills available in this area are excellent. We have access to oil and gas experience in Aberdeen so what we need in this area is talented people who can learn what we do and grow with us. In little over a year we have grown from one man in his home office to a business of nine – five in Aberdeen and now four in Weston.

Looking forward, the main growth will be in Weston, based around expansion of our engineering capability.



What are you most proud of?

In business, I am proud that we are employing good people in the local area, using local suppliers where we can. We are a complete export business selling engineering expertise to Texas, have equipment installed in the North Sea, Denmark and Norway, and soon hope to be shipping equipment to the Middle East.

Personally, I am proud of myself for making the leap, my wife Sheona for her support, and my youngest son Andrew for bringing his engineering experience from Aberdeen down to North Somerset at the start of this year.

What are your plans for the future?

The future is to grow this business. At some point I'd like to take a step back and let others do most of the day-to-day work but for now it's consuming all my time – it worries me, excites me, but is so enjoyable.



 www.abersea.co.uk

What is The Hive?

The Hive, set within Junction 21 Enterprise Area, is owned and managed by North Somerset Enterprise Agency.

It provides 20,000sq ft of managed office space for 40 to 60 tenants, with a range of resources and communal facilities to allow start-up and growing businesses to launch, develop and succeed.

There are easy in and out rental terms, dedicated and secure broadband, a managed business reception, plus virtual office services, hot desks and meeting rooms for non-tenants.

 www.thehiveweston.org.uk
www.innorthsomerset.co.uk

New parking rules set to come in

People who park inconsiderately along North Somerset's roads will soon face tougher consequences if the council takes control of parking enforcement.

Parking restrictions are used to manage congestion and ensure there is clear and fair access to public roads to meet the competing needs of residents, shops and businesses.

North Somerset is currently the only district within the Avon and Somerset police area where the police have control of on-street parking restrictions rather than the council.

This can lead to confusion so in September North Somerset Council's executive members agreed to apply to the Government to take on civil parking enforcement powers (CPE) for themselves.

Life finds out what this means....

Why does North Somerset Council want to bring in CPE?

Wide-ranging benefits will be felt if the council takes on CPE.

Traffic management will improve because CPE will lead to better enforcement of parking restrictions. This will help increase turnover of parking spaces in town centres and shopping streets, making it easier for visitors and shoppers to park.

Discouraging people from parking inconsiderately will also ease congestion and improve access for emergency vehicles, buses, waste and recycling lorries.

What's the difference between the police and council enforcing parking?

Parking violations will become a civil matter subject to a penalty charge, rather than a criminal offence. If you park carelessly in breach of traffic regulations, you will receive a fine, called a penalty charge notice. Any money raised from fines will be retained by the council rather than going to the treasury.

So is this just a way of raising money?

There is a deep-rooted public perception that councils see parking enforcement as a 'cash cow'. However, money raised through the scheme will go towards the costs of running it and any surplus will be invested into transport initiatives and road improvements.

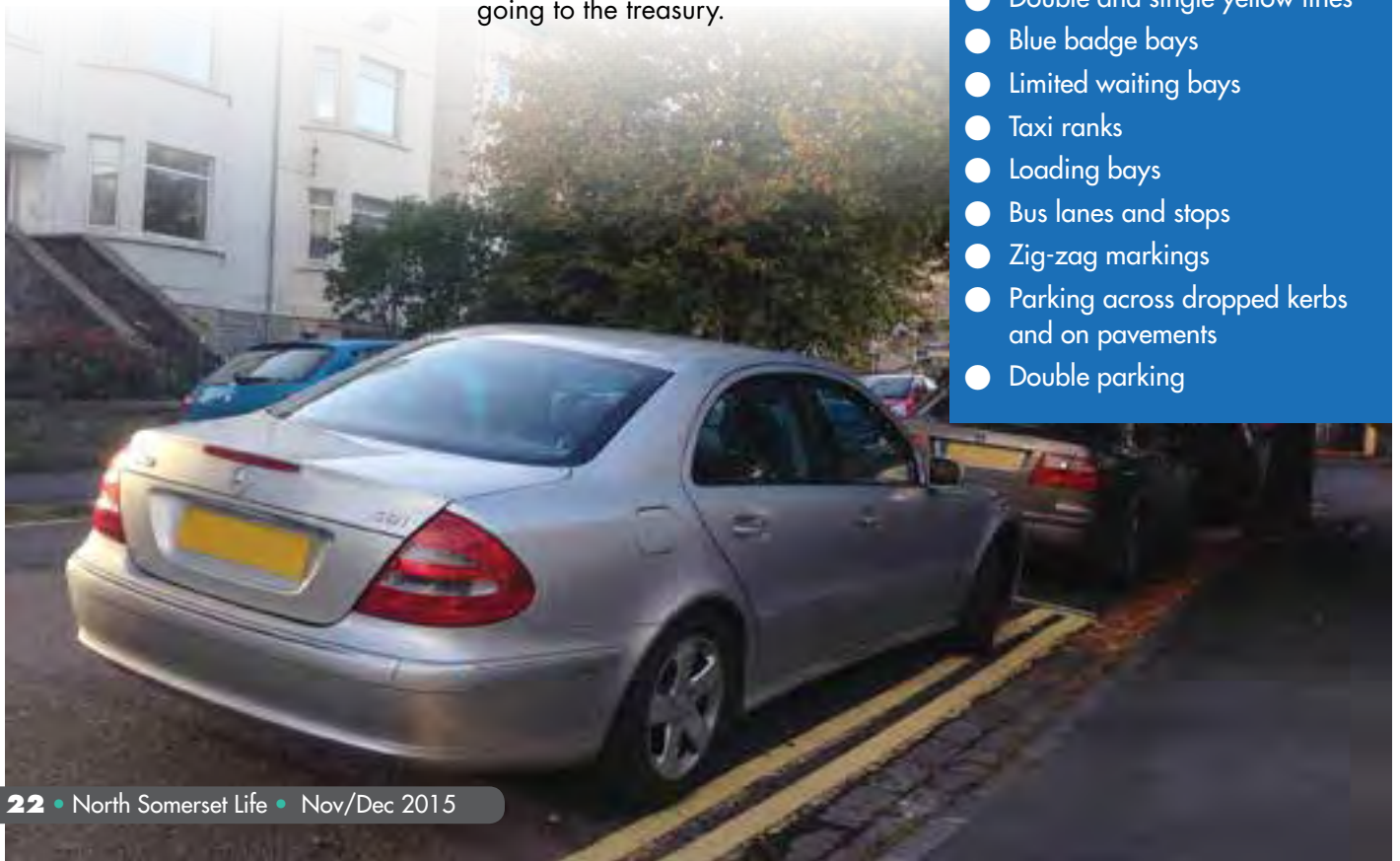
If CPE is introduced, the early payment discount will apply to payments made within 14 days rather than the current seven, so the cost of fines will actually decrease.

When will it come in?

North Somerset Council has to apply to the Department for Transport to take on CPE powers. Officers are working to submit an application in April next year, and a six-month application process will follow. This means CPE could come into effect in October 2016.

What will be enforced through CPE?

- Double and single yellow lines
- Blue badge bays
- Limited waiting bays
- Taxi ranks
- Loading bays
- Bus lanes and stops
- Zig-zag markings
- Parking across dropped kerbs and on pavements
- Double parking



Take time out

Christmas countdown starts here

Festive family fun is coming to North Somerset this month as the Christmas countdown begins...

Illuminated carnival returns

The night sky will be lit up in Weston-super-Mare when the stunning illuminated carnival returns this month.

More than 140 illuminated floats, marching bands, fancy dress walkers and entertainers will parade through the town during the extravaganza on **Friday 13 November**.

Thousands of visitors are expected to line the streets to see the two-mile long procession, which will take the same route as last year through the town and along the seafront.

www.northsomersetcarnival.co.uk



More dates for the diary

Weston Village community fireworks

Thursday 5 November

Locking Castle, Weston-super-Mare

www.lockingcastlechurch.org

Grand Pier fireworks

Saturday 21 November

Grand Pier, Weston-super-Mare

www.grandpier.co.uk

Theatre Shop returns

Music, theatre, comedy and dance performances in Clevedon until January

www.theatreshop.org.uk

Inside

Walk	24-25
Local events	26-27



Christmas lights switch-on

A full day of festive fun can be enjoyed in Weston when the Christmas lights are switched on.

The festivities start on **Saturday 14 November** when a Christmas-themed local producers market runs from **9am to 2pm** in the High Street.

Local musical acts will then entertain crowds on stage in the Italian Gardens, while world-famous Titan the Robot will be showcasing his unique blend of comedy, street theatre and music during performances in the Sovereign Centre at 3pm and 6pm.

The Christmas lights will be switched on at 5pm in the Italian Gardens and shops will stay open until 7pm. The evening will finish with a firework display at **7.15pm**.

The switch-on ceremony is organised by Weston Business Improvement District. The festive lights are funded by Weston Town Council and the firework display is funded by North Somerset Council.

Late night shopping will then continue every Thursday until 17 December, with events and entertainment in the town centre, including costume characters and carols.

Younger members of the family can also follow the free elf trail, which runs from **Saturday 14 November to Thursday 17 December**.

Visit locations around the town to pick up items to turn yourself into an elf.

Follow the event on the Weston BID Facebook page for more information.

 [westonbid](https://www.facebook.com/westonbid)



Discover Weston's street art

Street art is enjoying its moment in the spotlight with the Banksy effect still being felt in Weston-super-Mare – and local talent is blossoming.



How to get there

Start at: Scallys pub, Carlton Street. If driving, Carlton Street car park is next door and Weston train station is a short walk away.

Weston's own street artist JPS has been creating intricate stencils in the town for the last few years but many more have popped up recently thanks to Dismaland.

To celebrate this home-grown talent, a street art trail has been published to help people discover these artworks on their doorstep.

This *Life* walks follows a circular walk around the route. However, it doesn't include all the pieces in the trail and new artwork is constantly being added, so just keep your eyes peeled as you walk around the town.

Scally's pub in Carlton Street has become a hotspot for street art and is the perfect place to start the JPS art trail, with work by him and young female street artist Fawn.

Look out for Terminator, Big Deal, Balloon Girl and more.

From Scally's, head towards the seafront

and turn right at the Premier Inn to go straight on into Princess Royal Square.

Walk through the square and then turn right into Richmond Street to see the Bear Wall piece.

Turn left along the alleyway behind Bare Grills restaurant and the Painted on a Dark Knight piece is at the end.

Return to the seafront and turn right along Marine Parade. Keep your eyes peeled for Danger Mouse along this stretch.

After the water park, turn right up Greenfield Place and you'll spot Gogo girl and Cat.





Turn right onto Upper Church Road and follow the road round as it winds uphill. At the corner with Lower Church Road, you could head south to go straight to West Street and the High Street. Or you could continue on Upper Church Road and go through a gate to take a stroll through Grove Park.

Exit the park and go into Wadham Street to see Darth Vader on your left. Head into West Street and you might spot a helicopter and hovercraft.

Turn left and the Tudor Mall is facing you, featuring Yoda by JPS and Ewok by Fawn.

Look carefully and you might also see an upturned police car.



From here, turn left into Waterloo Street, cross the street, and continue along the Boulevard until you get to Alfred Street.

On the corner of Alfred Street and Burlington Street, watch out for Freddy Kruger jumping out at you.

Turn right into Meadow Street to see Dark Wednesday and Cat at Behind Bars.

Continue down Meadow Street and Predator is guarding MT Games.

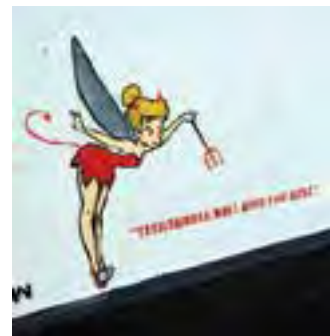
From here, you are back in the town centre and can return to your starting point.

Route information

Distance:
just over two miles

Difficulty:
easy – a mostly flat route but with a short walk uphill to the top of Grove Park.

Duration:
about an hour



© Crown copyright and database rights 2015 Ordnance Survey 100023397
You are not permitted to copy, sub-license, distribute or sell this data to third parties in any form.

Paper copies of the art trail can be picked up from outlets including Scally's, Bare Grills, MT Games, Coles Kitchen, Weston train station, the seafront, and various hotels and guesthouses.

To see all the venues, view the map online, or print out a copy visit
www.loveston.com/events
www.jpsart.co.uk



LOCAL EVENTS

NOVEMBER

Friday 6

Making Cancer History charity concert – featuring Eastertown, The Orphans and more 7.30pm, The Grand Pier, Weston-super-Mare. In aid of Teenage Cancer Trust. Tickets £15 from the gift shop or www.grandpier.co.uk

Saturday 7

Mendip Society walk – Burrington Combe 1.30pm, car park at the bottom of Burrington Combe. About 4 miles through Rickford. 01934 843 789

Trinity Singers Gloire Immortelle 7.30pm at St Mary's Church, Yatton. Including Fauré's Requiem. Tickets £10, under 18s free, from 01934 852 123, www.trinitysingers.co.uk or on the door.

Congresbury Singers presents Songs That Saw Us Through WWII 7.30pm, St Andrew's Church, Congresbury. £8 from Congresbury Post Office, Morgan's, 01275 878 740 or on the door.

Friday 13

Clevedon Community Firewalk 6.15pm, Clevedon Rugby Club. Sponsored charity fire walk for 100 people. £20 registration. Spectators welcome and food available. www.clevedoncommunityfirewalk.com

Saturday 14

Annual art exhibition by Lynne Castell's art groups 10am-4pm, Our Lady of Lourdes main hall, Baytree Road, Weston-super-Mare. Paintings, drawings cards and refreshments.

Ukulele Funhouse Orchestra 7.30pm, Clevedon Community Centre. Presented by Clevedon Lions Club. Tickets £10, £5 for children, from the Community Centre Box Office www.clevedonlions.org.uk

Thursday 19

Hugh Cornwell concert 7pm St Paul's Church, Walliscote Road, Weston-super-Mare. Original guitarist, singer and songwriter of The Stranglers. £20 from 0844 478 0898. www.lighthouse-weston.org.uk

Saturday 21

Christmas Fayre 10am-1pm, St Francis Church Hall, Nailsea. Organised by NW Somerset Branch of Parkinson's UK. Cakes, crafts, collectables and more. Free entry. 01275 855 524

Nailsea Concert Orchestra Autumn Concert 7.30pm, Nailsea Methodist Church. Including Schumann's Cello Concerto. Tickets £10, £1 for under 16s, from Nailsea Music Shop, 01275 855 021 or on the door.

Saturday 28

Christmas Bazaar 10am-noon, Hutton Village Hall. In aid of Weston Hospicecare.

DECEMBER

Thursday 10 – Saturday 12

Portishead Players present Sleeping Beauty Somerset Hall, Portishead. Tickets from 0333 666 3366, www.portisheadplayers.ticketsource.co.uk, or at Morgan-Westley / Mother Nature on Portishead High Street.

Saturday 19

Worle Community Choir Christmas Concert Songs from musicals, pop classics and Christmas songs. 7pm. Priory Community School. Tickets are £6 and available by calling 01934 622 542

CLUBS AND SOCIETIES

Mondays

Weston Monday Art Group (E) 10am, St Saviour's Church Hall, Locking Rd. 01934 514 127

Lynne Castell Calligraphy Art Group (E) 10.30am-1pm. 01934 628 760 or www.lynnecastell.f2s.com

Winscombe District U3A Coffee Morning (1, except Aug) 10am, Winscombe Community Centre. £1 inc refreshments.

Tots 1 (E, term time only) 10-11.30am, Bristol Road Baptist Church, Southside, Weston-super-Mare

Winscombe Probus Club (2 and 4) 10.30am, Winscombe Community Centre. 01934 820 893

Duplicate bridge (E)(and Thurs, Fri, Sat) 1.30pm, 21 Montpelier, Weston. 01934 633 530

Kewstoke Arts and Crafts Group (E) 2pm, Village Hall. 01934 628 309

Georgian Club for over 60s (E) 2pm, St Georges Community Centre, Willow Close. 01934 515 923

NHS Retirement Fellowship (2) 2pm, Our Lady of Lourdes Church Hall, Worle. 01934 417 850

Winscombe District U3A (3, except Aug and Dec) 2pm, Winscombe Community Centre. £1.50 members, £2 non-members.

Yatton Art Group (E) 2.15pm, Village Hall. 01934 249 907

Clevedon Mixed Leisure Club (1 and 3) 2.30pm, Consti Club, Kenn Road. 01275 875 179

Weston Flower Arrangement Society (4) 2.30pm, St Georges Hall. 01934 812 177

Whist drive in Portishead (E) 7.15pm. 01275 844 290

Clevedon Lions Club (3) 7.15pm, Walton Hotel. 01275 878 983

Weston Amateur Radio Society (E) 7.30pm, Weston Social Club, Drove Rd. 01761 221 206

Weston Quilters (1) 7.30pm, United Reform Church, Waterloo Street. 01934 834 278

Worle Lions (2) 8pm, Windsor Castle pub. www.worlelions.co.uk, 08458 339 862

Lions Club of Portishead (2) 8pm, Clarence House, High Street. 08432 895 330

Nailsea Lions Club (2) 8pm, Grove Sports Centre. 01275 791 921

Yatton WI (2) 8pm, Yatton Village Hall. 01934 834 796

Royal British Legion (Portishead) (3) 8pm, Clarence House, High Street. 01934 251 468

Tuesdays

Weston U3A (E) 10am, Friends Meeting House, High Street

Mendip Art Group (E) 10am, Banwell Village Hall. 01934 645 885

North Somerset Botanical Painting Society (E) 10am, Brackenwood Garden Centre, Abbots Leigh. 01934 832 952

Age UK free advice sessions (1) 10am-noon, Portishead Library, (2) 10am-noon, Nailsea Library, (4) 9.30am-12.30pm, Winscombe GP surgery. 0845 643 4621

Friends of Trendlewood Park (3)(and first Sun) 10am-1pm, Trendlewood Park, Nailsea. www.friendsoftrendlewoodpark.org.uk, 07879 607 492

Coffee Stop drop-in coffee morning (E) 10.30am, Milton Baptist Church, Baytree Rd. 01934 641 574

Kewstoke's Tiny Teds Toddler Group (E) 10.30am-noon, St Paul's Church Hall. £2 per family. 07980 384 034

Clevedon Probus Club 1974 (1)(3) 10.30am, Community Centre, Princes Rd. 01275 876 297

Clevedon Probus 2008 Club (2)(4) 10.30am, Clevedon Community Centre, Princes Rd. 01275 874 631

Multicultural Friendship Association (E) 1-3pm, Weston Room, Badger Centre, Wadham Street, Weston. 07587 335 963, www.mfa-wsm.org.uk

Lynne Castell Watercolours Art Group (E) 1-4pm, Our Lady of Lourdes Parish Room, Baytree Road, Weston-super-Mare. 01934 628 760 or www.lynnecastell.f2s.com

Portishead Rotary Club Memory Café (1)(3) 2.15pm, Jubilee Hall, Slade Rd. 01275 871 197

Weston Scrabble Club (E) 7pm, St Saviour's Church Hall, Locking Rd. 01934 620 948

Rotary Club of Portishead (E) 7.30pm, Clarence House, High Street. 01275 845 509

A1 Camera Club (E) 7.30pm, St Georges Community Centre, Willow Close. 01934 521 780

Nailsea Scrabble Club (E) 7.30pm (and Wed 2pm), Mizzymead Recreation Centre. 01275 464 864

Hutton Ladies Group (1) 7.30pm, Village Hall. 01934 623 450

Portishead Quilters (1)(3) 7.30pm, Redcliffe Hall. 01275 848 467

North Somerset Vintage Tractor Club (1) Redhill Village Club. 01275 474 649

Weston Railway Society (1) Function Room, Conservative Club. 01934 628 289

Clevedon Art Club (2) 7.30pm, St Mary's Church Hall, Castle Rd. 01275 879 556

Women of Weston Women's Institute (3) 7.30pm, Vintage Community Church, Hughenden Road, Weston. WeAreWOWWI@gmail.com

Weston Archaeological and Natural History Society (2) 7.30pm, Victoria Methodist Church Hall, Station Rd. 01934 620 785

Portishead Townswomen's Guild (4) 7.30pm, Folk Hall. 01275 847 271

Nailsea and District Model Railway Club (E) 7.30pm, Clevedon Craft Centre, off Moor Lane. www.nailsea-district-mrc.co.uk

Clevedon and District Flower Club (4) 7.30pm, Community Centre, Princes Rd. 01275 859 797

Nailsea Miners Rotary Club (E) 7.45pm, George pub, Backwell. 01275 854 641

Weston and Mendip Advanced Motorists' Group (3) 8pm, Village Hall, Crookes Lane, Kewstoke

North Somerset Modellers' Society (2) 8.30pm, Windsor Castle pub, Milton. 01934 417 907

Wednesdays

Lynne Castell Oils, Acrylics, Pastels Art Group (E) 10.30am-1pm. 01934 628 760 or www.lynnecastell.f2s.com





Age UK free advice sessions (1)(2)(3) 10am-noon, Town Hall, Weston-super-Mare, (4) 10am-noon, Cadbury Garden Centre. 0845 643 4621
Weston Ladies Cards (A) 10.30am, Night Jar pub, Mead Vale. 07979 051 001

Yeo Valley Probus Club (1)(3) 10.30am, Backwell Bowls Club. 01275 857 769

Backwell Probus Club (2)(4) 10.30am, West Backwell Bowling Club. 01275 462 627

North Somerset Over 50s Club (4) 11am, Clevedon Community Centre. 01275 842 282

Gordano Probus Club (2) 12.30pm, Clarence House, High Street, Portishead. 01275 398 706

Portishead Probus 73 Club (3) 1pm, Clarence House, High Street. 01275 814 249

Failand Art Group (E) 1.30pm, Village Hall, Oxhouse Lane. Jimpeck1502@gmail.com

Banwell Bridge Club (E) 1.30pm, Village Hall. 01934 518 690

Woodspring Scrabble Club (E) 2pm, United Reformed Church, Weston. 01934 815 358

Nailsea Scrabble Club (E) 2pm, Mizzymead Recreation Centre. 01275 464 864

Worle Friendship Club (E) 2pm, Worle Community Centre, Lawrence Rd. 01934 510 863

Weston Society of Arts (A) 2pm, Victoria Methodist Church Hall. 01934 520 564

Portbury Over Sixties Club (1) 2pm, Portbury Village Hall
Backwell Garden Club (3) 2pm, WI Hall. 01275 464 236

Portishead Senior Citizens Forum (3) 2.15pm, Folk Hall. 01275 843 678

Good Companions Senior Citizens Club (E) 2.30pm, Fenswood Court, Fenswood Rd, Long Ashton. 01275 393 617

Clevedon Senior Citizens' Forum (L) 2.30pm, Masonic Hall, Albert Road. 01275 874 296

Social/activity group for ages 40+ (E) Venues in Weston. 07733 411 238

Weston Amnesty International (2) 6.30pm, Loves café, Weston. 01934 419 014

Weston and Worle Bridge Club (E) 7pm (and Fri 2pm), St Joseph's Church Hall, Camp Rd. 01934 510 027

Weston Sea Cadets (E)(and Fri), 7pm, Cadet HQ, Sunnyside Rd North. 11 to 18-year-olds.

Portishead Spiritualist Association (E) 7.30pm, Brampton Way Playgroup Hall, Brampton Way. 01275 843 744

Wrington Vale Rotary Club (E) 7.30pm, Burrington Inn, Burrington Combe. 01934 844 214

Nailsea and District Horticultural Society (2) 7.30pm, United Reformed Church Hall, Stockway North. 01275 855 342

Nailsea Stamp and Postcard Club (2) 7.30pm, Mizzymead Recreation Centre. 01275 855 875

Nailsea and Backwell Townswomen's Guild (2) 7.30pm, Methodist Hall. 01275 810 579

Worle WI (3) 7.30pm, Castle Batch Community Centre, Bishop's Avenue. 01934 511 329

Portishead Floral Art Society (3) 7.30pm, Somerset Hall. £5 for visitors. 01275 374 201

Royal British Legion (Clevedon) (3) 7.30pm, Community Centre, Prince's Rd 01275 879 816

Gordano Valley 41 Club (4) 7.30pm, Royal Inn, Portishead. 01275 817 258

Weston Moose Social Evening (L) Ebdon Arms, Wick St Lawrence. £3 including some food, for charity. 01934 814 042 alan.mooswsm@outlook.com

Thursdays

Community Coffee Morning (E) 10am, Clarence Park Baptist Church, Walliscote Rd. 01934 424 550

Probus Club WSM (1)(3) 10am, Worlebury Golf Club, Worlebury. 01934 514 857 www.probusweston.com

Probus Club of Nailsea (2)(4) 10am, Mizzymead Social Club. 01275 852 515

Probus Milton (2)(4) 10am, Milton Methodist Church. 01934 525 476

Weston Twins and More (4) 10am, Kids Hut, Winter Gardens. 01934 528 348

Civil Service Retirement Fellowship (1)(3) 10am, Friends Meeting House, High Street, Weston. 01275 858 766

Copse Coffee drop-in coffee morning (A) 10.30am, Copse Rd Chapel, Seavale Rd, Clevedon. 01934 878 490

Notable Club (E) Uphill Scouts Hall. 07845 220 349

Social duplicate bridge (E) 2pm, Vintage Community Church Hall, Hughenden Road, Weston-super-Mare. 01934 627 751

Weston and District National Trust Association (2)(and fourth Fri) 2.15pm, Corpus Christi Church Hall, Weston. 01934 633 593

Yatton Knitting Club (E) 5.45-6.45pm, Yatton Library. All abilities welcome. Free tea or coffee. 01934 426 100

Vintage Hornby Railway Collectors (4) 6pm, Scout Hut, Totterdown Rd Weston. 01934 413 053

Loves Book Club (1) 6.30pm, Loves Cafe, 9 West Street. 01934 645 672

Vegetarian Cookery Club (A) 6.45pm, Church Hall, 500 Locking Rd, Worle. 01934 628 860

Weston Moose Semi Formal Dinner (1) Banwell Castle, £10 for two courses. 01934 647 717, alan.mooswsm@outlook.com

Weston Woodturning Circle (3) 7pm, Weston Football Club, Winterstoke Rd 01934 510 862

Weston Chess Club (E) 7.30pm, Weston-super-Mare Conservative Club, 24-26 Alexandra Parade. 01934 643 171

Weston-super-Mare RSPB (1, Sept-April) 7.30pm, St. Paul's Church Hall, Walliscote Rd. 01934 835 208

Weston-super-Mare Horticultural Society (2) 7.30pm, St Peter's Church Hall, Baytree Rd. 01275 392 690

Avon Wildlife Trust Long Ashton (3) 7.30pm, Jubilee Pavilion, Keedwell Hill. 01275 392 690

North Somerset Rural Business Forum (3) 7.30pm, Winford Manor Hotel. £7.50 for non members. 01531 820 307

Royal British Legion (Nailsea) (3) 7.30pm, Grove Sports Club. 01275 856 879

Bristol Sailors Meeting (4) 8pm, British Legion Hall, Long Ashton.

Weston Social (1)(3) 8.30pm, Royal Hotel Feathers Bar, Weston-super-Mare. westonsocial@virginmedia.com

Friday

Good Companions Senior Citizens Club (E) 9am, Somerset Hall, Portishead. 01275 848 059

Tots2 (E, term time only) 10-11.30am, Bristol Road Baptist Church, Southside, Weston-super-Mare

Mead Vale Friendship Club (over 50s) (E) 2pm, Community Hall, Worle. 01934 510 672

Portishead Folk Hall Senior Citizens Club (E) 2pm, Folk Hall, High Street, Portishead. £1, inc refreshments and entertainment. 01275 390 350

Scrabble Club (E) 2.15-5pm, Clevedon Conservative Club. £1 per session. 01275 342 974

Byte Home Computer Club (1)(3)(4) 7pm, Nailsea Fire Station, Pound Lane. 01275 852 521

North Somerset Quilters (3) 7.30pm, WI Hall, Station Rd, Backwell. 01275 463 119

Portishead Stamp Club (4) 7.30pm, Friends Meeting House, St Mary's Rd. 01275 374 738

Banwell Society of Archaeology (2) 7.30pm, Banwell Village Hall.

Saturdays

Hutton Lace and Craft Group (2) 9.30am, Village Hall. 01934 822 871

CREWS Backstage Support (E) 10am-1pm, The Stables, Princes Rd, Clevedon. 07824 821 814

Portbury Community Café (1) 10am, Village Hall. 07971 501 374

YABEEP Natural Beekeeping Group (2) 10.30am, Claverham Village Hall, Bishops Rd. YABEEP@gmail.com

Avon Guild of Spinners, Weavers and Dyers (2) 10.30am, Bowls Pavilion, Long Ashton Community Centre. 01275 464 526

Weston-super-Mare & District Family History (E) 2pm-3.30pm, Weston library, Town Hall, Walliscote Grove Rd.

Sundays

Worle Lions Quiz (1) Windsor Castle pub. Entry £2.50 inc food and cash prize. www.worlelions.co.uk 08458 339 862

I'm not gullible but I've been scammed...

...have you?



If you have been a victim of crime you should not feel ashamed or embarrassed.

Scammers are professional con artists who are not interested in you – only making money from you.

Try not to feel gullible if you've been exploited by a fraudster because they are tapping into your concerns.

Scams might include marketing vitamins and miracle cures at inflated prices to the health conscious, telling someone who is worried about money that they have won a prize draw, or offering a 'good' investment which ends up costing thousands.

Be suspicious. If you think you've become involved with a scam report it to
Citizens Advice Consumer Services: 03454 040 506

Men's health takes centre stage

Men are being urged to grow a mo', move more and get fit this winter...

Grow a mo' and move more

Moustaches are making a comeback this month as part of a popular campaign to help men live happier, healthier and longer lives.

Men are now growing a mo' as part of the global Movember initiative to highlight some of the biggest health issues they face, including prostate and testicular cancer, poor mental health and physical inactivity.

They just need to grow and groom a moustache for the 30 days during November and raise as much money as possible for The Movember Foundation.

And a new way to fundraise has been launched this year so Mo Sistas can take part and support their Mo Bros.



The challenge is to get active and move every day of Movember, whether a 30-minute walk, a lunchtime exercise club, learning to skate or a game of table tennis.

The initiative isn't just about getting fit, it's about shaking up your routine and trying something new.

Once you have signed up, keep track of your progress on your fundraising page and share with friends and family. You can sign up as an individual or team, or challenge friends to match your moves.

i Anyone concerned about their health should visit their local GP. To sign up to Movember visit uk.movember.com



Avoid the Santa costume this Christmas

MAN v FAT



Extra winter layers may be suitable for a Santa Claus costume but not if you want to lead a fit and healthy life.

Men in North Somerset who have piled on the pounds and now want to beat fat and get fit can take the opportunity to join a MAN v FAT weight-loss club.

Earlier this year, North Somerset became one of the first areas in the country to offer these weekly, no-nonsense, men-only weight-loss groups.

There are more than 20 million overweight and obese men in the UK but the diet industry is almost exclusively focused on women.

MAN v FAT clubs are helping residents get healthy through weekly meetings and online support.

i www.manvfat.com • Man v Fat: 0800 020 9535
weston@manvfat.com



Balancing the budget books

Significantly reduced funding and spiralling costs for services mean councils across the country are still facing the biggest financial challenges in a generation.



Since 2011, North Somerset Council has saved a massive £55m but the financial challenge is likely to continue for a number of years as the Government's austerity measures remain in place.

As well as this, the council is also having to deal with rising cost pressures of providing essential services.

These include increased costs of caring for vulnerable adults, increased costs for children needing additional care and support, increased costs of waste and recycling services, as well as a rising local birth rate and high expectations from residents.

Historically, North Somerset has been a low funded, low spending authority and instead of cutting back, it has embarked on an extensive transformation programme for the area.

Malcolm Coe, head of finance at North Somerset Council, said: "We may be short of money but we are not short of ambition.

"We recognised some time ago that to meet future challenges we would need to transform and reshape the council, and have embarked upon a wide-ranging change programme.

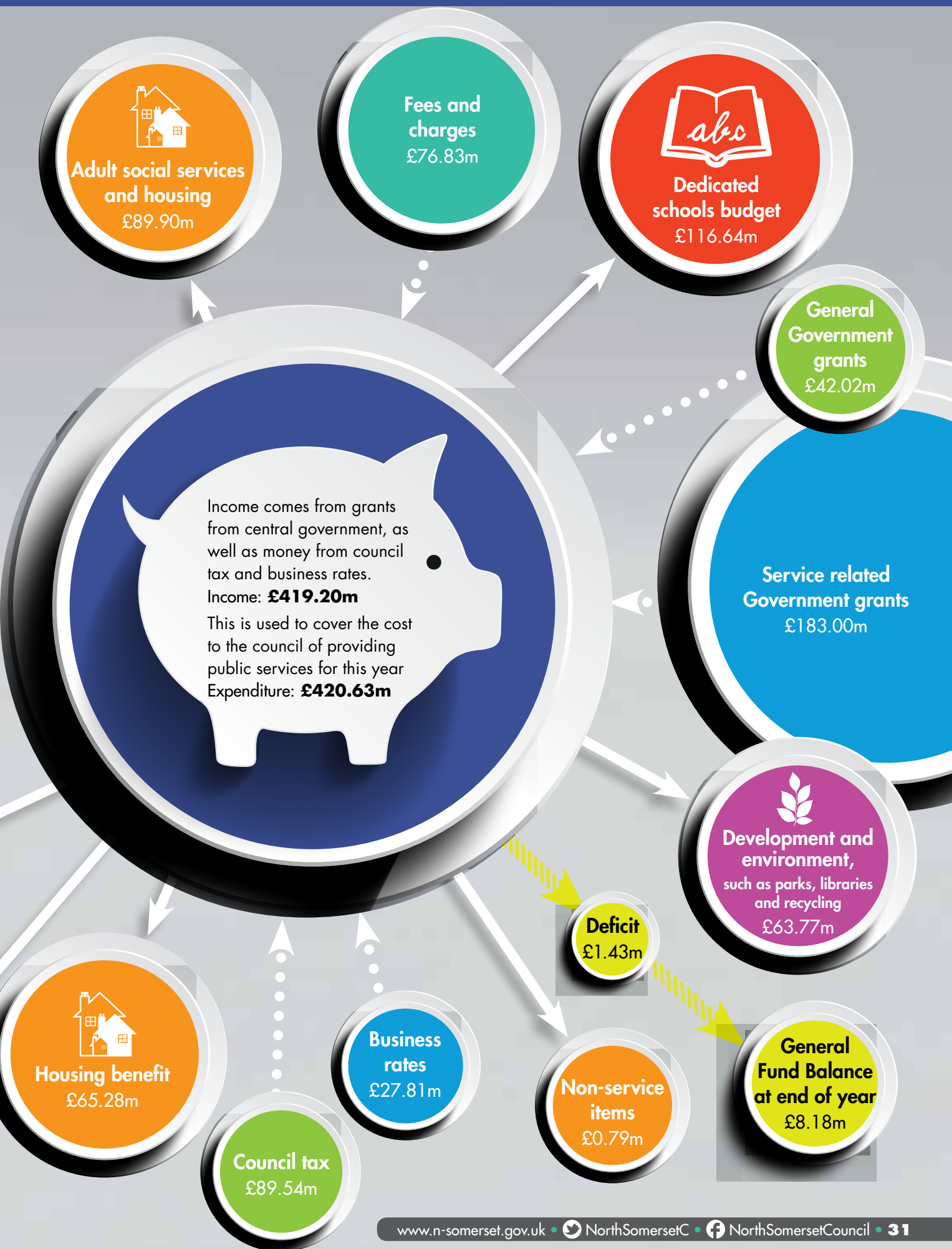
"We also recognised that we increasingly need to work in partnership with others, such as other local authorities, and our health, police and education colleagues, and that we needed to have a more commercial approach to generate the income needed to maintain services for the vulnerable."

Annual report

Every year councils must publish their accounts to show how they spend the public's money.

Here is a round-up of how the money went in and out of North Somerset Council's public purse during 2014/15:







Where does the money go?

North Somerset Council...

commissions of home care every week helping **11,300 hours**

1,135 people to live at home

deals with **6,000**

applications for school places every year

processes more than **2,000**

planning applications a year

is a corporate parent to **225**

looked after children

maintains **1,100km**

of roads

makes **184,000**

waste and recycling collections every week

North Somerset Council's capital investments in 2014/15

	£m
Existing roads	9.737
New roads/transport	11.724
Schools	9.975
Flood prevention	4.211
Property and asset management	3.076
Housing grants	2.679
Leisure and libraries	2.261
Other capital investment	2.755
Total	46.418

Preparing for the future

Minimising the impact of budget cuts while continuing to deliver high quality services is a priority for North Somerset Council.



At the same time, creating and seizing opportunities and stimulating regeneration and economic development is key to its future success.

In the past five years, North Somerset Council has...

- reduced the number of its buildings from 18 to two – the Town Hall in Weston-super-Mare and Castlewood building in Clevedon
- improved services for residents by bringing more partners 'under one roof'
- encouraged and promoted developed at Junction 21 Enterprise Area
- saved £8m in landfill tax alone, with more than 60 per cent of waste now being recycled
- promoted investment more widely across North Somerset
- created a new vision for Weston-super-Mare town centre, including the development of a new university campus, housing and leisure opportunities
- invested in the Weston Airfield site to create employment and housing.

What next?

The council's transformation programme has four key strands:

- **Digital first** – enabling self-help and improved customer access to services through a better web platform, e-payments facility and online accounts
- **Delivering together** – working in partnership, such as the integration of health and social care services, co-locating organisations to provide a 'single point of access', and redesigning services for children and young people with special educational needs and disabilities
- **Driving growth** – increasing prosperity, jobs and investment, especially through the regeneration of Weston-super-Mare town centre
- **One council** – Streamlining systems, processes and ways of working within the council.

 For more information call the finance team: **01934 634 619** • www.n-somerset.gov.uk/budget

All financial statements have been prepared in accordance with appropriate accounting policies. A full copy of the draft statement of accounts and the auditor's opinion was presented to the council's Audit Committee at the end of September.

Gully go

keepi

Nights are drawing in and leaves are falling from the trees so now is a particularly busy time for dedicated highways teams.

North Somerset Council officers work hard all year round to clear gullies and reduce the risk of flooding but during autumn and winter this needs to step up a gear.

A gully, sometimes called a road drain, is made up of a concrete pot under the road surface which is covered by an iron grate.

If the gully is full, blocked or damaged then water can build up around it, which in turn could lead to flooding on roads and nearby properties.

Surface water poses a danger to road users and it can cause damage by penetrating the road's layers.

The number of blocked gullies increases in autumn and winter because of fallen leaves blocking the grates and washing into the gullies, which also coincides with the higher rainfall at this time of year.

Keeping gullies clear

North Somerset Council is responsible for keeping more than 37,000 gullies across the area clean and clear.

A regular programme of gully and drainage cleaning means all gullies on the public highway are cleared once a year, or twice a year in areas which are more vulnerable to flooding.

As well as this, the team investigates all reports of blocked or damaged gullies.

Specialist lorries carry powerful equipment to drain the gullies and remove high volumes of waste quickly and safely.

Phil Bush, highway operations manager at North Somerset Council, said: "We aim to carry out urgent works within 24 hours. We give priority to areas where there is internal flooding within the living areas of someone's property or if there is a highways safety issue.

"But it is important to remember that flooding can still occur even if gullies are regularly cleared."

Road drainage is only designed to cater for normal weather conditions so if there is an exceptional volume of rain, or water runs off adjacent land or property, drainage systems can struggle to cope.



sh... ng roads clear this autumn and winter



In these cases, the water should drain away eventually but if it hasn't after a reasonable amount of time, it needs to be reported.

Officers also maintain council-owned ditches, although most ditches that are next to rural roads are the responsibility of the adjacent landowner.

Phil added: "While we don't empty ditches on private land, we will investigate concerns, as well as provide advice to landowners to help them fulfil their responsibilities by keeping ditches on their land clear.

"After all, keeping ditches clean benefits them and their neighbours in the surrounding area."

To report a blocked or damaged gully online visit www.n-somerset.gov.uk/flood

How you can help

Don't tip waste down gullies because this can cause them to block

If you see anyone doing this, report it online at www.n-somerset.gov.uk/flood

If you see gully cleansing taking place, please park elsewhere. If a car is blocking the way, the clearing cannot take place. In busy residential areas, signs and no waiting cones are put out the day before cleaning is due to take place.

If you notice that fallen leaves are starting to block a gully then feel free to remove them and clear the surface, but only if it is safe to do so.



Stay steady and move well

Exercise classes for older people are providing the perfect opportunity to strengthen both body and mind.

Staying Steady classes are gentle exercise sessions aimed at improving people's flexibility, co-ordination, strength and balance, which in turn helps reduce the risk of falls.

The sociable classes also bring people together and feelings of social isolation are reduced.

Between April 2014 and March 2015, nearly 7,300 people took part in classes throughout North Somerset, including 250 participants who were trying it out for the first time.

There is a wide range of sports available, including Tai Chi, walking football, Zumba, ball sport Boccia, dance fitness and more.

Classes are commissioned by North Somerset Council and run by Age UK Somerset, a local charity which works to promote the wellbeing of older people and make later life enjoyable and fulfilling.

Yvonne and Ian Burrough, both in their 80s, started a gentle chair-based exercise class in Weston-super-Mare last September.

Yvonne said: "The reason we started was for Ian, who has been in a wheelchair for many years and had been suffering with stiff and painful joints.

The logo for Go4Life North Somerset, with 'Go4Life' in a large, white, cursive font on a green rounded rectangle, and 'North Somerset' and 'www.go4life.org' in smaller white text below it.

Go4Life
North Somerset
www.go4life.org

New participants living in Weston-super-Mare can try a selection of chair based classes for free. Visit www.n-somerset.gov.uk/g4f or call 07530 777 895



"We noticed he had a lot of muscle strength deterioration, and I'd been suffering with lower back problems."

Ian said: "Since going to the class, I felt an improvement and even noticed some strength returning."

Yvonne added: "It is lovely that we can attend together, and we have also met some new friends. Now we've started, we don't want to stop."

Flexercise classes take place across the area and trained volunteer Tansin runs classes in Knightstone Place, Worle, every Thursday.

Tansin said: "We usually have up to 14 people in a class, some living within Knightstone."

"Some people start because their GPs tell them they need to start exercising but mobility causes a problem."

This was the case for regular attendee Gwen.

Gwen, who has osteoarthritis and uses a walking frame, said: "When the opportunity came up for me to go and try this new chair-based session, I thought I would just pop along to see what it was all about."

"After my first session, the enjoyment and laughter I had was just the incentive to carry on."

"I have made some lovely new friends and my general wellbeing has improved, especially my flexibility."

"I used to feel very stiff and found doing everyday chores difficult. I even feel younger some days."

"I would really recommend this and any form of exercise. You cannot beat the laughter and friendship I have felt over these past 10 months."

Clare Reeve is a regular attendee of the Extend Movement to Music class at Pill Community Centre.

Clare said: "I've been coming since the tutor Suze Delve started her class in Portbury a few years ago."

"I was widowed many years ago and have very little family but made the decision to get involved with activities in my community."

"We like each other's company and we now go to a ladies club and enjoy days out."

Clare has also suffered from arthritis and had a major heart operation

last year but was back in class after 12 weeks.

She said: "Remaining active has helped me both mentally and physically, and quickened my recovery."

"It has given me a life back again. I so enjoy meeting everyone in my class each week. I love Wednesdays."

Nikki Smith, from Age UK Somerset, said: "We all know the importance of

"It makes such a difference – if I don't do it, I stiffen up. I need to stay flexible."

maintaining and improving flexibility and mobility.

"Our classes help increase a range of movements, help prevent thickening of arteries and reduces the risk of injuries, muscle pain and cramps. They will also help you maintain energy levels to enjoy life to the full."

"Classes cater for every ability, from beginners to those returning to exercise or those just wanting to try something new."

i For more details of the classes contact Nikki Smith: **07530 777 895** or **nikki.smith@ageuksomerset** **www.ageuksomerset.org.uk**

Technology to support independent living



Innovative technology is helping people in North Somerset live independently in their own homes.

Telecare devices provide care and reassurance, whether this is by raising an alarm, reminding someone to take their tablets, or sensing their movements during the night.

Risks are reduced within the home and this can give the person more confidence, as well as providing peace of mind to family, friends and carers.

To discover what's available, a free event is taking place at The Campus, in Locking Castle, Weston-super-Mare, on Tuesday 8 December.

The Telecare marketplace event, organised by North Somerset Council and UK Telehealthcare, is the first of its kind in North Somerset.

More than 30 suppliers will be demonstrating products and services, and there will be an opportunity to attend presentations throughout the day to see the devices in action.

Telecare can be used as part of a package of support to help people with conditions such as dementia, stroke, epilepsy, or to assist with everyday risks such as falling.

It can be linked to Carelink, the community alarm system, to send an alert to the monitoring centre which can then arrange for help.

One carer said: "The person I care for has a few Telecare devices to enhance her independence.

"She had a nasty fall and spent all night on the floor at the bottom of her bed.



"Following this, I had a sensor placed on the bed which works on a timer. If she is out of bed for longer than the timer is set for, an alarm to a call centre is triggered.

"They will then phone the house and if there is no response, they will then call me so I can go and check on her."

People with eligible needs who receive help from health and social care services can borrow Telecare devices for free following an assessment of need.

A weekly charge is made for the council's 24-hour Carelink monitoring system, if linked devices are required.

Some services are available on a 'stand-by' basis for a weekly fee.

Devices can be bought privately. Call the Equipment and Demonstration Centre for details: **01275 888 804**



Care Connect: **01275 888 801**
www.n-somerset.gov.uk/telecare

Are you aware of the HIV risk?



Early testing of HIV can lead to better health, a longer life and bring peace of mind.

That's the message from HIV Prevention England, who will be launching National HIV Testing Week from Saturday 21 November.

The week aims to increase awareness of the virus, awareness and acceptability of testing, and access to testing within communities.

The HIV virus attacks the immune system and weakens the person's ability to fight infections and disease. It is most commonly caught by having sex without a condom.

Figures from 2013 show that in North Somerset, the most common causes of infection were sex between men (48 per cent) and sex between men and women (47 per cent).

And in the same year, the age group with the highest number of people identified with HIV was the over-50s.

About a quarter of all newly-diagnosed patients were diagnosed late but knowing your HIV status and your partner's gives you both peace of mind.

The best way to avoid HIV is to use a condom and never share needles or other injecting equipment, such as syringes, spoons and swabs.

Why have an HIV test?

Better health – the earlier you find out and start treatment, the longer you can stay in good health.

A longer life – someone with HIV can expect a close to normal life expectancy if they test early and treatment begins early.

Peace of mind – a negative test means you can get on with your life, be more motivated to stay safe, and be confident that you haven't put anyone else at risk.

Not testing means...

Worry – end the anxiety of taking risks and potentially giving HIV to others.

Doubt – months or years of risky sexual activity with delayed testing.

Unnecessary illness – early diagnosis means getting first class medical treatment and stops you getting serious illnesses such as TB and pneumonia. Unknowingly living with HIV can cause yourself damage.

Early death – late diagnosis of HIV by not testing early often means it's too late to get the full benefit of treatment.

Use condoms to protect against HIV and other STIs when you can't be certain of someone's HIV status.


For support and testing in North Somerset, and free condoms for under-25s, visit www.shnsomerset.co.uk

Free home HIV tests are available through the post and can be ordered from www.startswithme.org.uk

Rapid HIV tests which give results within 20 minutes are available through Terrence Higgins Trust clinics. Visit www.tht.org.uk or call: 08088 021 221

Online support for HIV-positive people is available from www.myhiv.org.uk

 [NationalHIVTestingWeek](https://www.facebook.com/NationalHIVTestingWeek)
 [#hivtestweek](https://twitter.com/hivtestweek)



HIV-TEST

Protecting our children

Safeguarding is high on the agenda across the UK and in North Somerset all agencies work together to protect children and young people from harm.

Child sexual exploitation is a serious crime and it has made national headlines in recent years following serious incidents in Rotherham.

Five men were jailed in 2010 for a series of sexual offences against young girls, some as young as 12.

A subsequent newspaper investigation reported child exploitation was much more widespread in the city and the local police and council were criticised for their handling of the case.

An independent inquiry into the scandal in 2014 revealed that more than 1,400 children are believed to have been sexually abused between 1997 and 2013.

Following this, North Somerset Council established a working party of councillors last year to ensure that lessons were being learned.

Feedback from this working party shows that in this area there is support and good working relationships between officers and councillors, and staff are willing to share information.

There's no clear evidence that child sexual exploitation is rife in North Somerset but we all have a duty to protect and raise concerns if we think young people are at risk or coming to harm.

What is child sexual exploitation?

Some adults form relationships with children or young people by pretending to be their friend, boyfriend or girlfriend and then manipulating them with bribes, threats, humiliation or even violence.

This grooming might lead to the child or young person being sexually abused and it can happen to anyone under the age of 18, from any background, to boys and young men as well as girls and young women.

Where to go for help and support

Lots of help and support is available for young people in North Somerset.

School nurses and other health professionals are fully trained to spot signs and understand abuse.



What to watch out for

Children and young people who are victims of sexual exploitation often do not realise they are being abused.

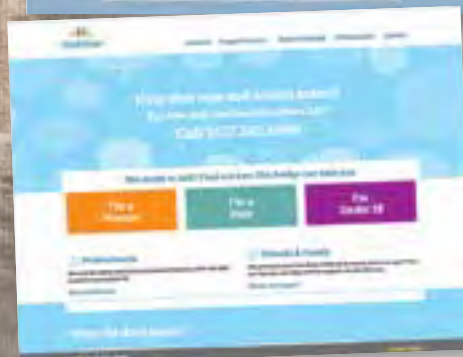
There are tell-tale signs for adults to watch out for though, including...

- going missing for periods of time or regularly returning home late
- regularly missing school or not taking part in education
- having older boyfriends or girlfriends
- displaying inappropriate sexualised behaviour



en and young people

- bruises or marks on the body, suffering from sexually transmitted infections, drug and alcohol misuse, or self-harming
- associating with other young people involved in exploitation
- mood swings or changes in emotional well-being, becoming secretive, defensive or aggressive when asked about their personal life
- acquiring expensive gifts such as mobile phones, jewellery or even drugs, and not explaining how they got them.



For more information contact...

NSPCC – wide-ranging services for children, young people and adults, including national 24/7 helplines.

0800 1111 (ChildLine)

0808 800 5000 (support for parents and carers)

www.nspcc.org.uk

Barnardo's – charity supporting children, young people and families affected by issues such as sexual exploitation and domestic abuse.

BASE (Barnardo's Against Sexual Exploitation), based in Bristol, supports victims of child sexual exploitation.

www.barnardos.org.uk

www.thinkyouknow.co.uk – honest and frank advice for children, young people and adults about keeping safe online, websites, new technology, sex and relationships.

CEOP – on online resource with information on what to do and how to report it if someone has acted inappropriately towards you, a child or young person online.

www.ceop.police.uk/safety-centre

The Bridge – a specialist referral centre for victims of sexual abuse in Avon and Somerset.

Specially trained professionals can help with sexual health information, information about reporting to the police, forensic medicals, counselling, follow-up care and practical support.

0117 342 6999 (free and confidential advice at any time)

www.turntothebridge.org



Dreaming of a green Christmas

Christmas is a time for celebrating with friends and family, giving presents – and recycling your waste.

Every year in North Somerset about 17,500 tonnes of waste that could have been recycled gets sent to landfill.

If all of this waste was recycled instead, North Somerset Council could save more than £1m a year.

Christmas is a time of excess, with about 30 per cent more waste generated during the festive season than at any other time of year.

This makes it an excellent time to get into good recycling habits ready for the year ahead.

Here are some ways to reduce the amount of waste going to landfill, save money and enjoy a green Christmas...



Getting ready....

- Take a reusable shopping bag with you or reuse old plastic bags when Christmas shopping
- Consider who you need to send Christmas cards to – some people might prefer ecards instead
- Try and avoid excessively packaged gifts – look for recycled products or think about giving experiences or vouchers
- Use wrapping paper without foil or glitter so it can be recycled once the present is unwrapped



The big day.....

Reduce your food waste while cooking by putting vegetable peelings in your food caddy, or use them to start composting. If you start composting now, you'll have free, nutritious compost ready to use in your garden by next winter. 220-litre compost bins can be bought for £15 from Council Connect:

01934 888 802

If you receive presents which are in a lot of packaging, separate out the parts that can be recycled – all types of rigid white, coloured or opaque plastic packaging (polyethylene terephthalate).

High-density polyethylene can be put into your recycling box along with flattened or folded cardboard.

Remember wine bottles, glass jars, foil, food and drinks cans can all be put in your green recycling, just separate them so crews can collect items more quickly.



When it's all over....

Recycle your real Christmas tree – take it to your nearest recycling centre or put it out with your green waste on your usual collection day

Reuse cards as next year's gift tags – simply cut out your favourite pictures and use these as tags for presents next year

Recycle your cards too, or the bits leftover, through the Woodland Trust scheme. Drop your cards off at Marks and Spencer stores during January

www.woodlandtrust.org.uk

Shred any foil or glittered wrapping paper that can't be recycled and use it as protective packaging for delicate items or to store and protect your decorations until next year

Recycle unwanted gifts by taking them to charity shops so someone else can enjoy them

Make it your New Year resolution to reduce your waste and recycle more – being green isn't just for Christmas...



- If last year's tree lights do not work, don't just throw them away. Instead, take them to your nearest recycling centre so they can be recycled with other small electrical items
- Save money and reduce food waste by buying and cooking only the food you know you'll eat. Visit www.lovefoodhatewaste.com for a portion calculator and tasty recipe ideas to use up any leftovers
- Try to buy 'nude vegetables' without layers of packaging when you're stocking up for your Christmas dinner
- Keep up-to-date with recycling collections in the run-up to the festive period up so your containers are empty and ready to use.



Plan your perfect journey online

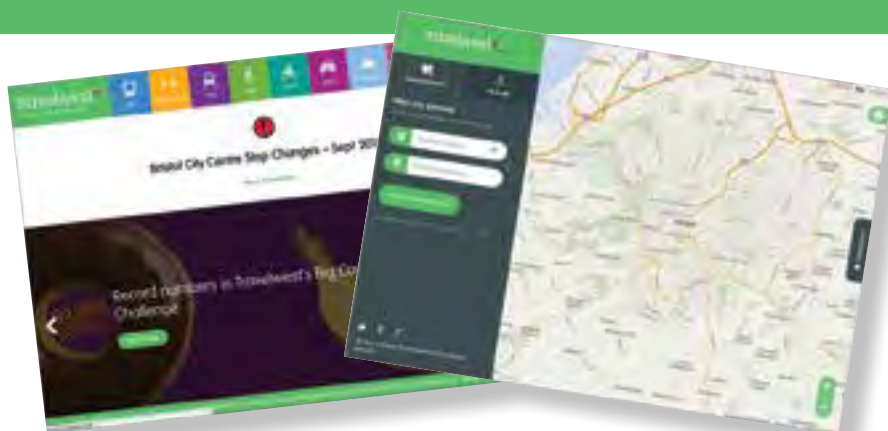
A handy online journey planner has launched to help travellers decide the best way to get around the West of England.

Travelwest has added the bespoke journey planner to its website as a way for people to compare travel options and get from A to B quickly and easily.

Just type in your start and end points and the website will show you the different ways you could get there.

Active options – walking and cycling – are listed first. The planner calculates how long it will take, how many calories you will burn, and how much CO₂ you have saved by going under your own steam.

Public transport is then listed in order of departure times. Journey times for both buses and trains are listed, including the time taken to walk to and from the stations.



The car is listed as the final alternative, with the quickest route mapped out and an estimated arrival time.

A 'near me' tab also shows all bus stops nearby and gives details on when the next bus is due, the timetable, real time information and a full route.

The website aims to provide travellers with information in the simplest way – and to help people become healthier and save money by encouraging them to get on a bike, put on their trainers or catch a bus instead of drive.

Both the Travelwest website and journey planner are mobile friendly.

travelwest+

 www.travelwest.info/journeyplanner



Weston to Nailsea is just a click away

Helping you plan your journey however you like to travel



www.travelwest.info/journeyplanner



Get vocal, be heard

Residents who are on the receiving end of council services often have good ideas about how to make them better.

North Somerset Council strives to provide the best standards of customer care and it listens to residents' views and takes them into account, where possible, when making future decisions.

You said:

My mum has dementia and forgets where she parks the car. How can you help?

We did:

Changes have been to two of the biggest car parks in Weston-super-Mare to help people remember where they left their car.

Officers from North Somerset Council's parking services team attended a Dementia Friends course earlier this year so they could learn more about what life is like for people with dementia.

The team considered the different ways people could remember which floor or area they had left their

vehicle in and, as a result, colourful pictures and symbols have been introduced at Carlton Street multi-storey car park and Melrose car park in Knightstone Road.

The objects had to be different shapes, colours, and not in a shape that some may find frightening, such as a snake.

Dementia affects the short-term memory and people with the illness can find it difficult to remember recent events, sometimes becoming disorientated.

At Carlton Street, each floor of the car park has a number and a picture of a common seaside sight. They can be found by the entrances, lifts and pedestrian exits.



At Melrose, stencils have been used to mark symbols of sea animals on different lanes of the car park.

The council will consider introducing pictures in other areas in the future.

You said:

Can we have a mobile library stop closer to the shops in Backwell?

We did:

After consultation with the parish council, a new mobile library stop has been installed in the Rodney Road car park so it is closer to the shopping area and more convenient for residents.

The mobile library had previously stopped at Backwell Leisure Centre for two hours every Monday. Now the time is split between the two locations – Rodney Road from 2-3pm and the leisure centre from 3.05-4.05pm every Monday.

This new service is proving popular and there was a 91 per cent increase in customer visits during the first two months.



YOUR VIEWS



Dear Editor,

I read your article [in Sept's *Life*] about the restoration of Clevedon Marine Lake. It described the desilting operation as 'exposing the lake bed for the first time in 80 years'.

I can remember as a boy in the 1950s watching silt being removed by two men using what we would now call water cannons. The silt was simply washed away through the original drainage channel.

I can clearly recall that a group of us congregated by the outflow and, using forked sticks, would catch eels as they washed down to the outflow pipe.

The whole bed of the lake was exposed. Health and safety in those days was pretty non-existent and as young boys we were allowed anywhere we could get!

Durham Bubb, Clevedon

Jo Tasker, marine lake ranger:

Thank you for your comments. We welcome such information and

would love other people to let us know their memories of the lake.

We have several projects running alongside the lake restoration and many ways for people to get involved.

- Submit written pieces inspired by the lake for an anthology which will be published in association with Clevedon Community Bookshop (www.clevedoncommunitybookshop.coop/events).
- We are working with Weston College to record orally and through video people's memories and stories relating to the lake.
- Photographs of the lake, past and present, can be submitted to create an exhibition and archive.
- An art exhibition is planned for next year.

Anyone interested in getting involved can email joanna.tasker@n-somerset.gov.uk or call 01934 427 277

Send your items to Editor, North Somerset *Life* North Somerset Council Floor 1, Town Hall Weston-super-Mare, BS23 1UJ or email editor@n-somerset.gov.uk

@NorthSomersetC

NorthSomersetCouncil

NorthSomersetC

Items submitted without a valid name and address will not be considered for publication. Please tell us if you do not want your details published. Due to space restrictions letters may be edited.

We can't show all of your photos in *Life* but you can see them at pinterest.com/NorthSomersetC



Alan Harrison



Alicja Garbien



Simon James



Many topics are covered on Twitter and Facebook and last month these issues were raised.

Why there are no street lights on from Strode centre in Clevedon up to Hill Road and beyond? There are now at least three shops opening at 7am.

North Somerset Council These lights are on part-night lighting and after the clocks go back, they come on about 5am. We are gradually replacing part-night lighting with a dimming system, where lights stay on all night but dim automatically after about 11pm.

[re: prohibition of fallen wood sign] Jokers! If I want wood, I'll get wood.

North Somerset Council The sign informs the public that removing wood is theft. Weston Woods is there for everyone to enjoy and

for wildlife to use as a home and food store.

North Somerset *Life* is the award winning magazine for the people of North Somerset.

Your copy should be delivered with your post unless you use Royal Mail's opt out service to block unaddressed mail. You can download this issue and back issues from www.n-somerset.gov.uk/nsl or pick copies up from council buildings.

Coming in the next issue

- Tackling cyber bullying
- Family Link scheme

Your next issue of *Life* will be delivered from:

Monday 4 January 2016



www.n-somerset.gov.uk

Report it. Request it. Pay for it.

www.n-somerset.gov.uk/connect

8am – 6pm Mon – Fri

Council Connect for all streets and open spaces enquiries:

01934 888 802

Care Connect for all social services enquiries:

01275 888 801

care.connect@n-somerset.gov.uk

Main switchboard:

01934 888 888

Emergency (out of hours):

01934 622 669

North Somerset Council
Town Hall

Weston-super-Mare BS23 1UJ

Tide timetables for Weston-super-Mare

Tide facts

Approximate high water times at:

Clevedon: 10 min

Portishead: 18 min

later than

Weston-super-Mare.

Weather conditions which differ from the average will have an effect on the differences between predicted and actual tide times.

Strong winds can hold the tide in or push the tide out. Air pressure can also cause fluctuations in predicted levels.

Tidal predictions for Weston-super-Mare have been computed by the Proudman Oceanographic Laboratory.

Copyright reserved.

www.n-somerset.gov.uk/tidetimes

November 2015

Date	High water		Low water		High water		Low water	
	Time	Height (m)	Time	Height (m)	Time	Height (m)	Time	Height (m)
	AM				PM			
1 Sun	09:43	11.44	03:10	1.41	22:10	10.83	15:29	1.74
2 Mon	10:27	10.49	03:48	1.97	22:57	9.87	16:09	2.28
3 Tue	11:15	9.64	04:30	2.50	23:51	9.11	16:57	2.78
4 Wed	–	–	05:24	2.97	12:17	9.05	18:04	3.18
5 Thu	01:01	8.73	06:43	3.31	13:33	8.91	19:52	3.27
6 Fri	02:20	8.90	08:33	3.11	14:53	9.33	21:07	2.75
7 Sat	03:33	9.55	09:31	2.50	15:58	10.03	21:56	2.17
8 Sun	04:26	10.29	10:15	1.95	16:46	10.66	22:37	1.74
9 Mon	05:09	10.88	10:54	1.57	17:25	11.10	23:14	1.47
10 Tue	05:46	11.27	11:30	1.33	18:00	11.38	23:48	1.30
11 Wed	06:19	11.53	–	–	18:32	11.56	12:03	1.19
12 Thu	06:50	11.72	00:21	1.21	19:04	11.71	12:37	1.11
13 Fri	07:22	11.83	00:54	1.17	19:37	11.77	13:10	1.10
14 Sat	07:56	11.81	01:28	1.21	20:12	11.68	13:45	1.20
15 Sun	08:32	11.61	02:00	1.37	20:49	11.40	14:19	1.42
16 Mon	09:09	11.23	02:32	1.62	21:28	10.96	14:54	1.70
17 Tue	09:49	10.74	03:03	1.89	22:13	10.45	15:31	1.98
18 Wed	10:39	10.23	03:48	2.16	23:07	9.96	16:24	2.26
19 Thu	11:41	9.85	04:49	2.45	–	–	17:40	2.48
20 Fri	00:14	9.66	06:15	2.67	12:56	9.77	19:10	2.52
21 Sat	01:32	9.72	07:47	2.60	14:16	10.15	20:31	2.20
22 Sun	02:51	10.25	09:01	2.19	15:27	10.84	21:35	1.76
23 Mon	04:00	10.99	10:05	1.74	16:30	11.56	22:40	1.37
24 Tue	04:58	11.69	11:08	1.29	17:25	12.12	23:32	0.96
25 Wed	05:48	12.20	11:56	0.92	18:13	12.47	–	–
26 Thu	06:35	12.52	00:17	0.70	18:58	12.63	12:38	0.73
27 Fri	07:18	12.66	00:58	0.63	19:43	12.60	13:18	0.73
28 Sat	08:00	12.56	01:36	0.73	20:26	12.31	13:56	0.91
29 Sun	08:43	12.19	02:12	1.00	21:09	11.75	14:33	1.24
30 Mon	09:24	11.55	02:50	1.40	21:51	10.99	15:10	1.67

December 2015

Date	High water		Low water		High water		Low water	
	Time	Height (m)	Time	Height (m)	Time	Height (m)	Time	Height (m)
	AM				PM			
1 Tue	10:06	10.77	03:26	1.85	22:33	10.18	15:48	2.10
2 Wed	10:49	10.03	04:03	2.28	23:18	9.48	16:30	2.49
3 Thu	11:36	9.43	04:49	2.66	–	–	17:21	2.82
4 Fri	00:13	8.97	05:46	2.99	12:37	9.04	18:25	3.10
5 Sat	01:20	8.76	07:02	3.23	13:49	8.99	20:02	3.16
6 Sun	02:30	8.96	08:42	3.05	14:57	9.32	21:13	2.76
7 Mon	03:33	9.49	09:37	2.54	15:55	9.86	21:59	2.26
8 Tue	04:25	10.13	10:19	2.02	16:43	10.43	22:39	1.83
9 Wed	05:08	10.74	10:57	1.61	17:25	10.91	23:17	1.50
10 Thu	05:47	11.22	11:35	1.32	18:03	11.29	23:55	1.28
11 Fri	06:25	11.57	–	–	18:41	11.57	12:14	1.15
12 Sat	07:02	11.81	00:33	1.17	19:20	11.75	12:52	1.08
13 Sun	07:40	11.94	01:11	1.14	19:59	11.84	13:32	1.09
14 Mon	08:19	11.94	01:51	1.21	20:41	11.77	14:14	1.18
15 Tue	09:01	11.77	02:31	1.36	21:23	11.53	14:57	1.35
16 Wed	09:46	11.44	03:12	1.56	22:08	11.12	15:41	1.56
17 Thu	10:34	11.00	03:56	1.79	22:58	10.65	16:31	1.79
18 Fri	11:28	10.56	04:52	2.02	23:55	10.21	17:33	2.00
19 Sat	–	–	06:00	2.24	12:31	10.24	18:45	2.17
20 Sun	01:03	9.96	07:17	2.38	13:44	10.18	20:00	2.18
21 Mon	02:19	10.05	08:33	2.30	14:58	10.44	21:07	2.01
22 Tue	03:31	10.46	09:38	2.03	16:04	10.90	22:12	1.74
23 Wed	04:35	11.02	10:45	1.67	17:05	11.39	23:11	1.36
24 Thu	05:31	11.56	11:37	1.27	17:58	11.79	23:57	1.03
25 Fri	06:19	11.96	–	–	18:45	12.06	12:21	1.00
26 Sat	07:04	12.21	00:39	0.86	19:29	12.17	13:01	0.91
27 Sun	07:46	12.27	01:19	0.85	20:10	12.09	13:40	0.98
28 Mon	08:27	12.11	01:56	0.99	20:51	11.79	14:17	1.17
29 Tue	09:06	11.73	02:33	1.24	21:30	11.28	14:52	1.45
30 Wed	09:43	11.18	03:07	1.55	22:07	10.66	15:26	1.75
31 Thu	10:19	10.57	03:40	1.87	22:42	10.02	16:01	2.05

Christmas and New Year collection dates

Collection Day	Revised Collection Day
Fri 25 Dec	Mon 28 Dec
Mon 28 Dec	Tues 29 Dec
Tues 29 Dec	Wed 30 Dec
Wed 30 Dec	Thurs 31 Dec
Thurs 31 Dec	Sat 2 Jan
Fri 1 Jan	Mon 4 Jan
Mon 4 Jan	Tues 5 Jan
Tues 5 Jan	Wed 6 Jan
Wed 6 Jan	Thurs 7 Jan
Thurs 7 Jan	Fri 8 Jan