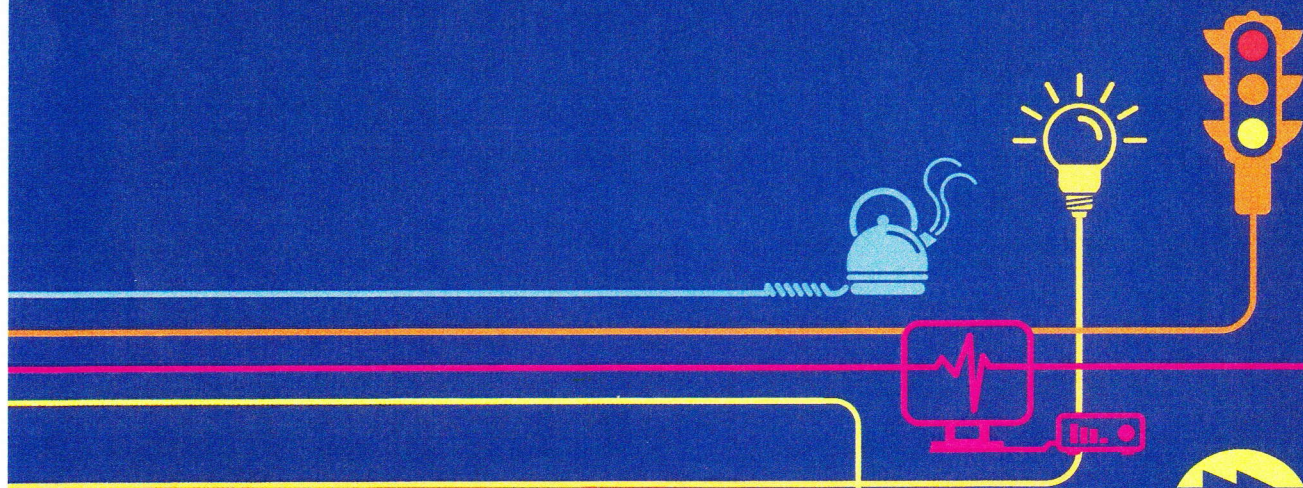


Works Plans

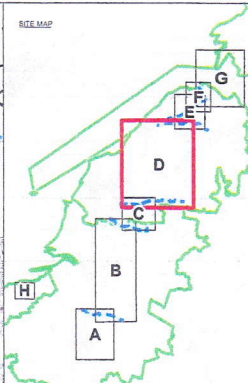
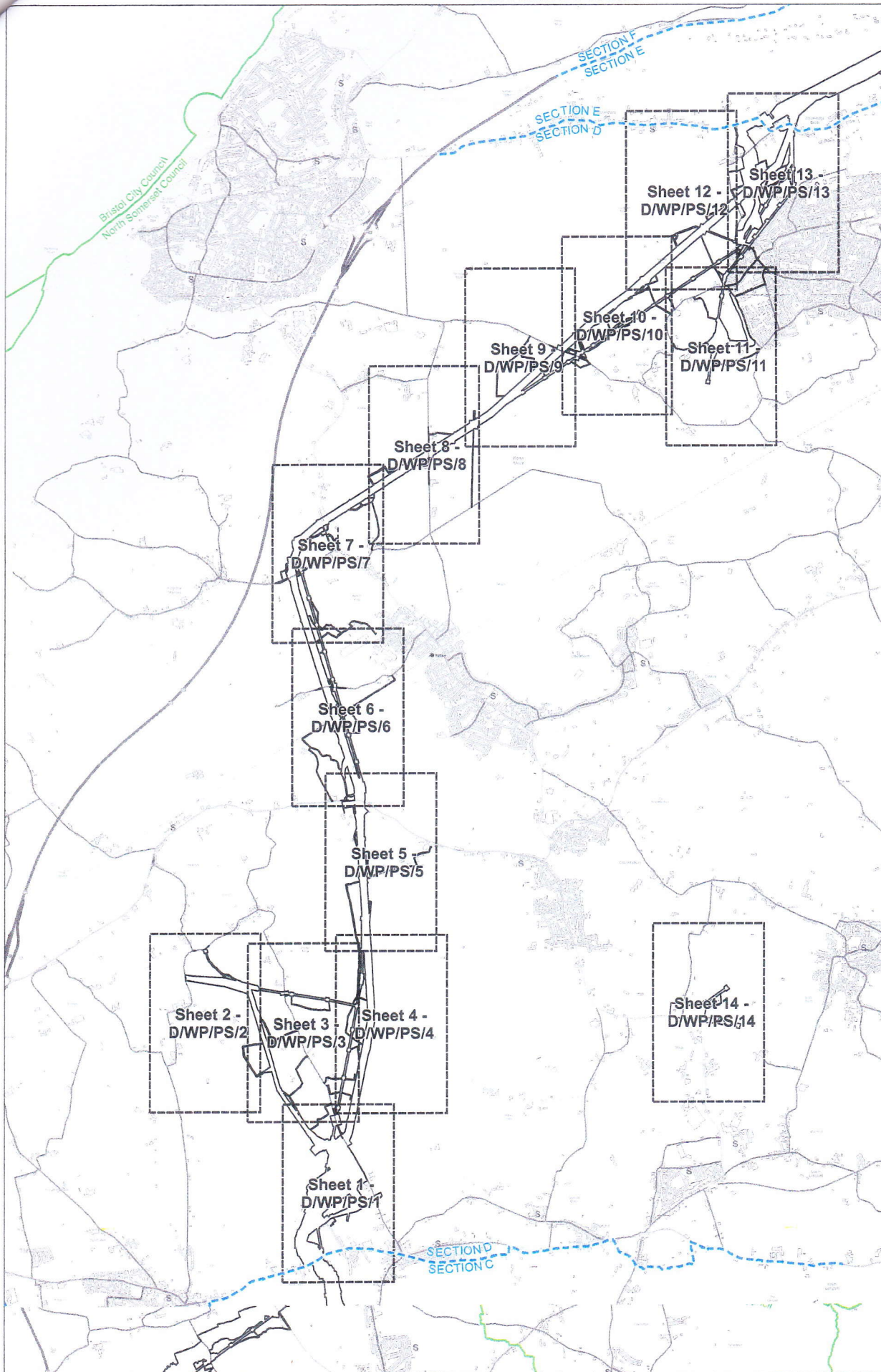
Section D - Somerset Levels and Moors North

Hinkley Point C Connection Project

*Regulation 5(2)(j) of the Infrastructure Planning
(Applications: Prescribed Forms and Procedure)
Regulations 2009*



NATIONAL GRID (HINKLEY POINT C CONNECTION PROJECT) ORDER
KEY PLAN FOR WORKS PLANS
(REGULATION 5(2)(j))
SECTION D
SHEET 1 OF 1
NORTH SOMERSET COUNCIL

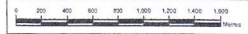


Key

—	ORDER LIMITS
—	LOCAL AUTHORITY BOUNDARY
- - -	SECTION BOUNDARY
- - -	SHEET INDEX

Notes
This drawing is scaled at paper size A1, therefore any prints taken at smaller sizes will affect accuracy of the measurement units and should not be scaled against.

Coordinate System: British National Grid
Units: Metre
Projection: Transverse Mercator
Datum: OSGB 1936
Scale Factor: 0.9996
X Centroid Coordinate: 342699
Y Centroid Coordinate: 165405



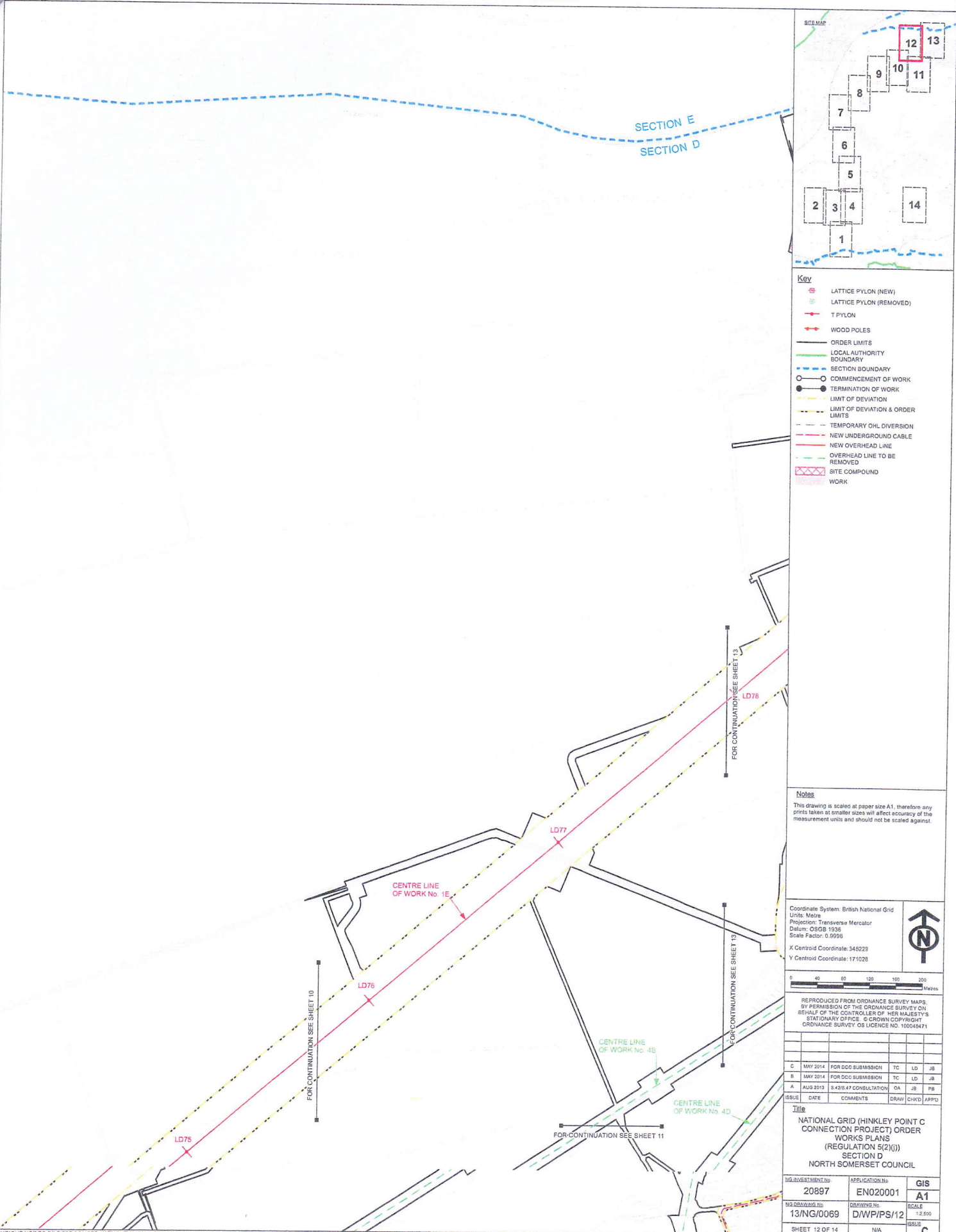
REPRODUCED FROM ORDNANCE SURVEY MAPS, BY PERMISSION OF THE ORDNANCE SURVEY ON BEHALF OF THE CONTROLLER OF HER MAJESTY'S STATIONARY OFFICE. © CROWN COPYRIGHT ORDNANCE SURVEY. OS LICENCE NO. 100045471

ISSUE	DATE	COMMENTS	DRAW	CHKD	APPD
B	MAY 2014	FOR ODD SUBMISSION	JC	LD	JB
A	AUG 2013	\$425 47 CONSULTATION	ML	JB	PB

Title
NATIONAL GRID (HINKLEY POINT C CONNECTION PROJECT) ORDER
KEY PLAN FOR WORKS PLANS
(REGULATION 5(2)(j))
SECTION D
NORTH SOMERSET COUNCIL

NG.DRAWING.No.	20897	APPLICATION No.	EN020001	GIS	A1
NG.DRAWING.No.	13/NG/0068	DRAWING No.	D/WP/KP/1	SCALE	1:50,000
SHEET 1 OF 1		N/A		ISSUE	B

NATIONAL GRID (HINKLEY POINT C CONNECTION PROJECT) ORDER
WORKS PLANS
(REGULATION 5(2)(j))
SECTION D
SHEET 12 OF 14
NORTH SOMERSET COUNCIL



SHEET 13 OF 14
NORTH SOMERSET COUNCIL

